

EGFR(Phospho Ser1071) Polyclonal Antibody

Description

Product type	Primary Antibody
Code	BT-AP06053
Host	Rabbit
Isotype	IgG
Size	100ul, 50ul, 20ul
Immunogen	The antiserum was produced against synthesized peptide derived from human EGFR around the phosphorylation site of Ser1071. AA range:1036-1085
Mol wt	134277
Species reactivity	Human, Mouse, Rat
Clonality	Polyclonal
Recommended application	WB, ELISA
Concentration	1 mg/ml
Full name	Epidermal growth factor receptor
Synonyms	Epidermal growth factor receptor; EGFR; ERBB; ERBB1; HER1; Epidermal growth factor receptor; Proto-oncogene c-ErbB-1; Receptor tyrosine-protein kinase erbB-1

This product is for research use only, not for use in human, therapeutic or diagnostic procedure.

Background

The protein encoded by this gene is a transmembrane glycoprotein that is a member of the protein kinase superfamily. This protein is a receptor for members of the epidermal growth factor family. EGFR is a cell surface protein that binds to epidermal growth factor. Binding of the protein to a ligand induces receptor dimerization and tyrosine autophosphorylation and leads to cell proliferation. Mutations in this gene are associated with lung cancer.

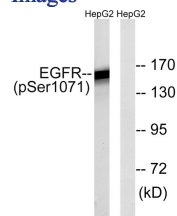
Recommended Dilution

WB: 1: 500 - 1: 2000

ELISA: 1: 5000

Not yet tested in other applications.

Images



Western blot analysis of lysates from HepG2 cells treated with serum 20% 15', using EGFR (Phospho-Ser1071) Antibody. The lane on the right is blocked with the phospho peptide.

Storage

-20°C for 1 year