

## Nkx-6.3 Polyclonal Antibody

### Description

<b>Product type</b>	Primary Antibody
<b>Code</b>	BT-AP06058
<b>Host</b>	Rabbit
<b>Isotype</b>	IgG
<b>Size</b>	20ul, 50ul, 100ul
<b>Immunogen</b>	The antiserum was produced against synthesized peptide derived from human NKX6.3. AA range:161-210
<b>Mol wt</b>	28948
<b>Species reactivity</b>	Human, Mouse, Monkey
<b>Clonality</b>	Polyclonal
<b>Recommended application</b>	WB, IF, ELISA
<b>Concentration</b>	1 mg/ml
<b>Full name</b>	Nkx-6.3 Antibody
<b>Synonyms</b>	NKX6-3; Homeobox protein Nkx-6.3

**This product is for research use only, not for use in human, therapeutic or diagnostic procedure.**

### Background

The NKX family of homeodomain proteins controls numerous developmental processes. Members of the NKX6 subfamily, including NKX6-3, are involved in development of the central nervous system (CNS), gastrointestinal tract, and pancreas (Alanentalo et al. 2006 [PubMed 16326147])

### Recommended Dilution

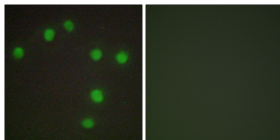
WB: 1: 500 - 1: 2000

IF: 1: 200 - 1: 1000

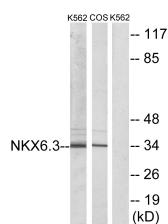
ELISA: 1: 10000

Not yet tested in other applications.

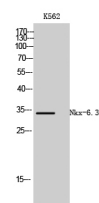
### Images



Immunofluorescence analysis of HUVEC cells, using NKX6.3 Antibody. The picture on the right is blocked with the synthesized peptide.



Western blot analysis of lysates from K562 and COS7 cells, using NKX6.3 Antibody. The lane on the right is blocked with the synthesized peptide.



Western Blot analysis of K562 cells using Nkx-6.3 Polyclonal Antibody cells nucleus.

## Storage

-20°C for one year

501 Changsheng S Rd, Nanhu Dist, Jiaxing, Zhejiang, China

Tel: 86 21 31007137 | E-mail: [save@bt-laboratory.com](mailto:save@bt-laboratory.com) | [www.bt-laboratory.com](http://www.bt-laboratory.com)