

NLRX1 Polyclonal Antibody

Description

Product type	Primary Antibody
Code	BT-AP06065
Host	Rabbit
Isotype	IgG
Size	20ul, 50ul, 100ul
Immunogen	The antiserum was produced against synthesized peptide derived from the Internal region of human NLRX1. AA range:581-630
Mol wt	107616
Species reactivity	Human, Mouse, Rat
Clonality	Polyclonal
Recommended application	WB, IHC-p, ELISA
Concentration	1 mg/ml
Full name	NLRX1 Antibody
Synonyms	NLR family member X1 (Caterpillar protein 11.3) (CLR11.3) (Nucleotide-binding oligomerization domain protein 26) (Nucleotide-binding oligomerization domain protein 5) (Nucleotide-binding oligomerizati

This product is for research use only, not for use in human, therapeutic or diagnostic procedure.

Background

The protein encoded by NLRX1 (NLR family member X1) is a member of the NLR family and localizes to the outer mitochondrial membrane. The encoded protein is a regulator of mitochondrial antiviral responses. Three transcript variants encoding the same protein have been found for NLRX1.

Recommended Dilution

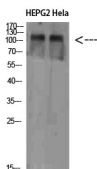
WB: 1: 500 - 2000

IHC-p: 1: 50 - 300

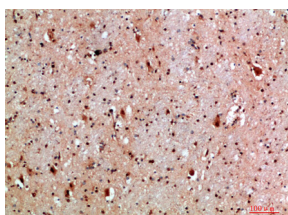
ELISA: 1: 10000 - 20000

Not yet tested in other applications.

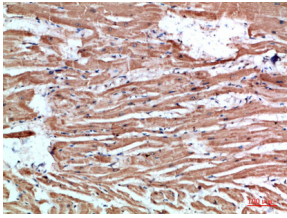
Images



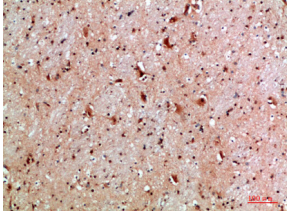
Western Blot analysis of HEPG2 HeLa cells using NLRX1 Polyclonal Antibody diluted at 1:1000. Secondary antibody was diluted at 1:20000



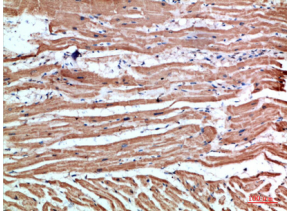
Immunohistochemical analysis of paraffin-embedded human-brain, antibody was diluted at 1:200



Immunohistochemical analysis of paraffin-embedded human-heart, antibody was diluted at 1:200



Immunohistochemical analysis of paraffin-embedded human-brain, antibody was diluted at 1:200



Immunohistochemical analysis of paraffin-embedded human-heart, antibody was diluted at 1:200

Storage

-20°C for one year

501 Changsheng S Rd, Nanhu Dist, Jiaxing, Zhejiang, China

Tel: 86 21 31007137 | E-mail: save@bt-laboratory.com | www.bt-laboratory.com