

NM23-H2 Polyclonal Antibody

Description

Product type	Primary Antibody
Code	BT-AP06068
Host	Rabbit
Isotype	IgG
Size	20ul, 50ul, 100ul
Immunogen	The antiserum was produced against synthesized peptide derived from human NM23. AA range:91-140
Mol wt	17298
Species reactivity	Human, Mouse, Rat
Clonality	Polyclonal
Recommended application	WB, ELISA
Concentration	1 mg/ml
Full name	NM23-H2 Antibody
Synonyms	NME2; NM23B; Nucleoside diphosphate kinase B; NDK B; NDP kinase B; C-myc purine-binding transcription factor PUF; Histidine protein kinase NDKB; nm23-H2

This product is for research use only, not for use in human, therapeutic or diagnostic procedure.

Background

Nucleoside diphosphate kinase (NDK) exists as a hexamer composed of 'A' (encoded by NME1) and 'B' (encoded by this gene) isoforms. Multiple alternatively spliced transcript variants have been found for this gene. Read-through transcription from the neighboring upstream gene (NME1) generates naturally-occurring transcripts (NME1-NME2) that encode a fusion protein comprised of sequence sharing identity with each individual gene product.

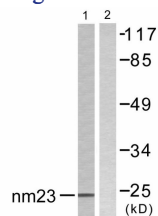
Recommended Dilution

WB: 1: 500 - 1: 2000

ELISA: 1: 5000

Not yet tested in other applications.

Images



Western blot analysis of lysates from K562 cells, using NM23 Antibody. The lane on the right is blocked with the synthesized peptide.

Storage

-20°C for one year