

NMUR1 Polyclonal Antibody

Description

Product type	Primary Antibody
Code	BT-AP06082
Host	Rabbit
Isotype	IgG
Size	20ul, 50ul, 100ul
Immunogen	The antiserum was produced against synthesized peptide derived from human NMUR1. AA range: 1-50
Mol wt	47351
Species reactivity	Human
Clonality	Polyclonal
Recommended application	WB, IF, ELISA
Concentration	1 mg/ml
Full name	NMUR1 Antibody
Synonyms	NMUR1; GPR66; Neuromedin-U receptor 1; NMU-R1; G-protein coupled receptor 66; G-protein coupled receptor FM-3

This product is for research use only, not for use in human, therapeutic or diagnostic procedure.

Background

Receptor for the neuromedin-U and neuromedin-S neuropeptides.

Recommended Dilution

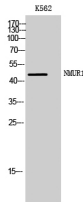
WB: 1: 500 - 1: 2000

IF: 1: 200 - 1: 1000

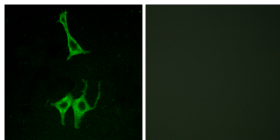
ELISA: 1: 5000

Not yet tested in other applications.

Images



Western Blot analysis of K562 cells using NMUR1 Polyclonal Antibody



Immunofluorescence analysis of LOVO cells, using NMUR1 Antibody. The picture on the right is blocked with the synthesized peptide.

Storage

-20°C for one year