

ADHX Polyclonal Antibody

Description

Product type	Primary Antibody
Code	BT-AP06085
Host	Rabbit
Isotype	IgG
Size	20ul, 50ul, 100ul
Immunogen	Synthesized peptide derived from human protein . at AA range: 280-360
Mol wt	N/A
Species reactivity	Human, Mouse, Rat
Clonality	Polyclonal
Recommended application	WB, ELISA
Concentration	1 mg/ml
Full name	Alcohol dehydrogenase class-3
Synonyms	Alcohol dehydrogenase class-3 ;EC 1.1.1.1;Alcohol dehydrogenase 5;Alcohol dehydrogenase class chi chain;Alcohol dehydrogenase class-III;Glutathione-dependent formaldehyde dehydrogenase;FALDH

This product is for research use only, not for use in human, therapeutic or diagnostic procedure.

Background

This gene encodes a member of the alcohol dehydrogenase family. Members of this family metabolize a wide variety of substrates| including ethanol| retinol| other aliphatic alcohols| hydroxysteroids| and lipid peroxidation products. The encoded protein forms a homodimer. It has virtually no activity for ethanol oxidation| but exhibits high activity for oxidation of long-chain primary alcohols and for oxidation of S-hydroxymethyl-glutathione| a spontaneous adduct between formaldehyde and glutathione. This enzyme is an important component of cellular metabolism for the elimination of formaldehyde| a potent irritant and sensitizing agent that causes lacrymation| rhinitis| pharyngitis| and contact dermatitis. The human genome contains several non-transcribed pseudogenes related to this gene.

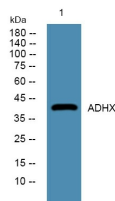
Recommended Dilution

WB: 1: 500 - 1: 2000

ELISA: 1: 5000 - 1: 20000

Not yet tested in other applications.

Images



Western blot analysis of lysates from A431 cells, primary antibody was diluted at 1:1000, 4°C overnight

Storage

-20°C for 1 year