

## NOC2L Polyclonal Antibody

### Description

<b>Product type</b>	Primary Antibody
<b>Code</b>	BT-AP06087
<b>Host</b>	Rabbit
<b>Isotype</b>	IgG
<b>Size</b>	20ul, 50ul, 100ul
<b>Immunogen</b>	The antiserum was produced against synthesized peptide derived from human NOC2L. AA range:602-651
<b>Mol wt</b>	84905
<b>Species reactivity</b>	Human, Mouse, Rat
<b>Clonality</b>	Polyclonal
<b>Recommended application</b>	WB, IHC-p, ELISA
<b>Concentration</b>	1 mg/ml
<b>Full name</b>	NOC2L Antibody
<b>Synonyms</b>	NOC2L; NIR; Nucleolar complex protein 2 homolog; Protein NOC2 homolog; NOC2-like protein; Novel INHAT repressor

**This product is for research use only, not for use in human, therapeutic or diagnostic procedure.**

### Background

Histone modification by histone acetyltransferases (HAT) and histone deacetylases (HDAC) can control major aspects of transcriptional regulation. NOC2L represents a novel HDAC-independent inhibitor of histone acetyltransferase (INHAT) (Hublitz et al. 2005 [PubMed 16322561]).

### Recommended Dilution

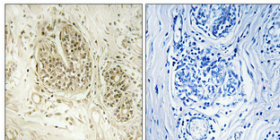
WB: 1: 500 - 1: 2000

IHC: 1: 100 - 1: 300

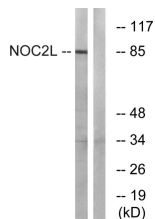
ELISA: 1: 40000

Not yet tested in other applications.

### Images



Immunohistochemical analysis of paraffin-embedded Human breast cancer. Antibody was diluted at 1:100(4° overnight). High-pressure and temperature Tris-EDTA,pH8.0 was used for antigen retrieval. Negative contrl (right) obtaned from antibody was pre-absorbed by immunogen peptide.



Western blot analysis of lysates from MCF-7 cells, using NOC2L Antibody. The lane on the right is blocked with the synthesized peptide.

## Storage

-20°C for one year

501 Changsheng S Rd, Nanhu Dist, Jiaxing, Zhejiang, China

Tel: 86 21 31007137 | E-mail: [save@bt-laboratory.com](mailto:save@bt-laboratory.com) | [www.bt-laboratory.com](http://www.bt-laboratory.com)