

NOC3L Polyclonal Antibody

Description

Product type	Primary Antibody
Code	BT-AP06088
Host	Rabbit
Isotype	IgG
Size	20ul, 50ul, 100ul
Immunogen	The antiserum was produced against synthesized peptide derived from human NOC3L. AA range:415-464
Mol wt	92548
Species reactivity	Human, Mouse
Clonality	Polyclonal
Recommended application	WB, ELISA
Concentration	1 mg/ml
Full name	NOC3L Antibody
Synonyms	NOC3L; AD24; C10orf117; FAD24; Nucleolar complex protein 3 homolog; NOC3 protein homolog; Factor for adipocyte differentiation 24; NOC3-like protein; Nucleolar complex-associated protein 3-like protei

This product is for research use only, not for use in human, therapeutic or diagnostic procedure.

Background

NOC3L (NOC3 Like DNA Replication Regulator) is a Protein Coding gene. GO annotations related to this gene include poly (A) RNA binding and binding.

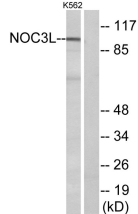
Recommended Dilution

WB: 1: 500 - 1: 2000

ELISA: 1: 40000

Not yet tested in other applications.

Images



Western blot analysis of lysates from K562 cells, using NOC3L Antibody. The lane on the right is blocked with the synthesized peptide.

Storage

-20°C for one year