

## NOR-1 Polyclonal Antibody

### Description

<b>Product type</b>	Primary Antibody
<b>Code</b>	BT-AP06107
<b>Host</b>	Rabbit
<b>Isotype</b>	IgG
<b>Size</b>	20ul, 50ul, 100ul
<b>Immunogen</b>	The antiserum was produced against synthesized peptide derived from human NR4A3. AA range:387-436
<b>Mol wt</b>	68230
<b>Species reactivity</b>	Human, Mouse, Rat
<b>Clonality</b>	Polyclonal
<b>Recommended application</b>	WB, ELISA
<b>Concentration</b>	1 mg/ml
<b>Full name</b>	NOR-1 Antibody
<b>Synonyms</b>	NR4A3; CHN; CSMF; MINOR; NOR1; TEC; Nuclear receptor subfamily 4 group A member 3; Mitogen-induced nuclear orphan receptor; Neuron-derived orphan receptor 1; Nuclear hormone receptor NOR-1

**This product is for research use only, not for use in human, therapeutic or diagnostic procedure.**

### Background

NR4A3 (nuclear receptor subfamily 4 group A member 3) encodes a member of the steroid-thyroid hormone-retinoid receptor superfamily. The encoded protein may act as a transcriptional activator. The protein can efficiently bind the NGFI-B Response Element (NBRE). Three different versions of extraskeletal myxoid chondrosarcomas (EMCs) are the result of reciprocal translocations between this gene and other genes. The translocation breakpoints are associated with Nuclear Receptor Subfamily 4, Group A, Member 3 (on chromosome 9) and either Ewing Sarcoma Breakpoint Region 1 (on chromosome 22), RNA Polymerase II, TATA Box-Binding Protein-Associated Factor, 68-KD (on chromosome 17), or Transcription factor 12 (on chromosome 15). Multiple transcript variants encoding different isoforms have been found for NR4A3.

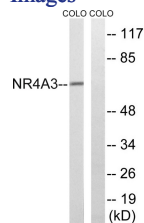
### Recommended Dilution

WB: 1: 500 - 1: 2000

ELISA: 1: 40000

Not yet tested in other applications.

### Images



Western blot analysis of lysates from COLO cells, using NR4A3 Antibody. The lane on the right is blocked with the synthesized peptide.

### Storage

-20°C for one year