

NPA1 Polyclonal Antibody

Description

Product type	Primary Antibody
Code	BT-AP06124
Host	Rabbit
Isotype	IgG
Size	20ul, 50ul, 100ul
Immunogen	The antiserum was produced against synthesized peptide derived from human URB1. AA range:2013-2062
Mol wt	254403
Species reactivity	Human
Clonality	Polyclonal
Recommended application	IHC-p, ELISA
Concentration	1 mg/ml
Full name	NPA1 Antibody
Synonyms	URB1; C21orf108; KIAA0539; NOP254; NPA1; Nucleolar pre-ribosomal-associated protein 1; Nucleolar protein 254 kDa; URB1 ribosome biogenesis 1 homolog

This product is for research use only, not for use in human, therapeutic or diagnostic procedure.

Background

URB1, also named as C21orf108, KIAA0539 and NPA1, is a 2271 amino acid protein that is homologous to the *S. cerevisiae* protein URB1 which is a nucleolar protein involved in the normal accumulation of 25S and 5. S rRNAs and may also play a role in the biosynthesis of the 60S ribosomal unit. Also localized to the nucleolus, human URB1 is thought to have the same functions as *S. cerevisiae* URB1. The antibody is specific to URB1.

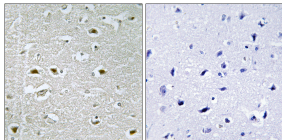
Recommended Dilution

IHC: 1: 100 - 1: 300

ELISA: 1: 40000

Not yet tested in other applications.

Images



Immunohistochemistry analysis of paraffin-embedded human brain, using URB1 Antibody. The picture on the right is blocked with the synthesized peptide.

Storage

-20°C for one year