

AK1C4 Polyclonal Antibody

Description

Product type	Primary Antibody
Code	BT-AP06132
Host	Rabbit
Isotype	IgG
Size	20ul, 50ul, 100ul
Immunogen	Synthesized peptide derived from human protein . at AA range: 1-80
Mol wt	N/A
Species reactivity	Human, Rat, Mouse
Clonality	Polyclonal
Recommended application	WB, ELISA
Concentration	1 mg/ml
Full name	Aldo-keto reductase family 1 member C4
Synonyms	Aldo-keto reductase family 1 member C4 ;EC 1.1.1.-;3-alpha-HSD1;3-alpha-hydroxysteroid dehydrogenase type I;EC 1.1.1.50;Chlordecone reductase;CDR;EC 1.1.1.225;Dihydrodiol dehydrogenase 4

This product is for research use only, not for use in human, therapeutic or diagnostic procedure.

Background

This gene encodes a member of the aldo/keto reductase superfamily, which consists of more than 40 known enzymes and proteins. These enzymes catalyze the conversion of aldehydes and ketones to their corresponding alcohols by utilizing NADH and/or NADPH as cofactors. The enzymes display overlapping but distinct substrate specificity. This enzyme catalyzes the bioreduction of chlordecone, a toxic organochlorine pesticide, to chlordecone alcohol in liver. This gene shares high sequence identity with three other gene members and is clustered with those three genes at chromosome 10p15-p14.

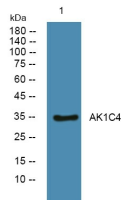
Recommended Dilution

WB: 1: 500 - 1: 2000

ELISA: 1: 5000 - 1: 20000

Not yet tested in other applications.

Images



Western blot analysis of lysates from K562 cells, primary antibody was diluted at 1:1000, 4°C overnight

Storage

-20°C for 1 year