

## NPRL2 Polyclonal Antibody

### Description

<b>Product type</b>	Primary Antibody
<b>Code</b>	BT-AP06137
<b>Host</b>	Rabbit
<b>Isotype</b>	IgG
<b>Size</b>	20ul, 50ul, 100ul
<b>Immunogen</b>	Synthesized peptide derived from the C-terminal region of human NPRL2.
<b>Mol wt</b>	43658
<b>Species reactivity</b>	Human, Mouse, Rat
<b>Clonality</b>	Polyclonal
<b>Recommended application</b>	WB, ELISA
<b>Concentration</b>	1 mg/ml
<b>Full name</b>	NPRL2 Antibody
<b>Synonyms</b>	NPRL2; TUSC4; Nitrogen permease regulator 2-like protein; NPR2-like protein; Gene 21 protein; G21 protein; Tumor suppressor candidate 4

This product is for research use only, not for use in human, therapeutic or diagnostic procedure.

### Background

Suppresses Src-dependent tyrosine phosphorylation and activation of PDPK1 and its downstream signaling. Down-regulates PDPK1 kinase activity by interfering with tyrosine phosphorylation at the Tyr-9 Tyr-373 and Tyr-376 residues. May act as a tumor suppressor. Suppresses cell growth and enhanced sensitivity to various anticancer drugs.

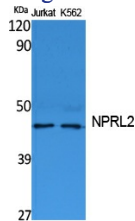
### Recommended Dilution

WB: 1: 500 - 1: 2000

ELISA: 1: 20000

Not yet tested in other applications.

### Images



Western Blot analysis of extracts from Jurkat, K562 cells, using NPRL2 Polyclonal Antibody. Secondary antibody was diluted at 1:20000

### Storage

-20°C for one year