

## AT2A3 Rabbit Polyclonal Antibody

### Description

Product type	Primary Antibody
Code	BT-AP06144
Host	Rabbit
Isotype	IgG
Size	100ul, 50ul, 20ul
Immunogen	Synthesized peptide derived from human AT2A3
Mol wt	114730
Species reactivity	Human, Mouse, Rat
Clonality	Polyclonal
Recommended application	WB
Concentration	1 mg/ml
Full name	AT2A3
Synonyms	AT2A3

This product is for research use only, not for use in human, therapeutic or diagnostic procedure.

### Background

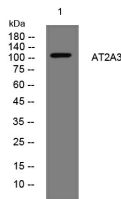
This gene encodes one of the SERCA Ca<sup>2+</sup>-ATPases, which are intracellular pumps located in the sarcoplasmic or endoplasmic reticula of muscle cells. This enzyme catalyzes the hydrolysis of ATP coupled with the translocation of calcium from the cytosol to the sarcoplasmic reticulum lumen, and is involved in calcium sequestration associated with muscular excitation and contraction. Alternative splicing results in multiple transcript variants encoding different isoforms.

### Recommended Dilution

WB: 1: 500 - 1: 2000

Not yet tested in other applications.

### Images



Western blot analysis of lysates from HuvEc cells, primary antibody was diluted at 1:1000, 4°C overnight

### Storage

-20°C for 1 year