

NPY2-R Polyclonal Antibody

Description

Product type	Primary Antibody
Code	BT-AP06148
Host	Rabbit
Isotype	IgG
Size	20ul, 50ul, 100ul
Immunogen	The antiserum was produced against synthesized peptide derived from human NPY2R. AA range:1-50
Mol wt	42731
Species reactivity	Human, Mouse, Rat
Clonality	Polyclonal
Recommended application	WB, IF, ELISA
Concentration	1 mg/ml
Full name	NPY2-R Antibody
Synonyms	NPY2R; Neuropeptide Y receptor type 2; NPY2-R; NPY-Y2 receptor; Y2 receptor

This product is for research use only, not for use in human, therapeutic or diagnostic procedure.

Background

NPY2R (Neuropeptide Y Receptor Y2) is a Protein Coding gene. Among its related pathways are Signaling by GPCR and Peptide ligand-binding receptors. Gene Ontology (GO) annotations related to NPY2R include G-protein coupled receptor activity and calcium channel regulator activity. An important paralog of NPY2R is NPY1R.

Recommended Dilution

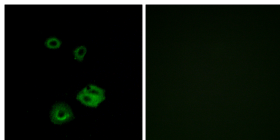
WB: 1: 500 - 1: 2000

IF: 1: 200 - 1: 1000

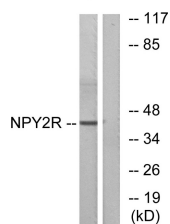
ELISA: 1: 5000

Not yet tested in other applications.

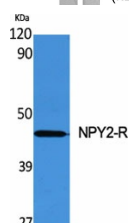
Images



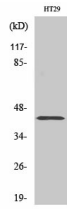
Immunofluorescence analysis of A549 cells, using NPY2R Antibody. The picture on the right is blocked with the synthesized peptide.



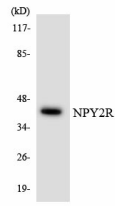
Western blot analysis of lysates from HepG2 cells, using NPY2R Antibody. The lane on the right is blocked with the synthesized peptide.



Western Blot analysis of various cells using NPY2-R Polyclonal Antibody diluted at 1:500



Western Blot analysis of HT29 cells using NPY2-R Polyclonal Antibody diluted at 1:500



Western blot analysis of the lysates from HUVEC cells using NPY2R antibody.

Storage

-20°C for one year

501 Changsheng S Rd, Nanhu Dist, Jiaxing, Zhejiang, China

Tel: 86 21 31007137 | E-mail: save@bt-laboratory.com | www.bt-laboratory.com