

## Nrf3 Polyclonal Antibody

### Description

<b>Product type</b>	Primary Antibody
<b>Code</b>	BT-AP06177
<b>Host</b>	Rabbit
<b>Isotype</b>	IgG
<b>Size</b>	20ul, 50ul, 100ul
<b>Immunogen</b>	The antiserum was produced against synthesized peptide derived from human NFE2L3. AA range:491-540
<b>Mol wt</b>	76154
<b>Species reactivity</b>	Human
<b>Clonality</b>	Polyclonal
<b>Recommended application</b>	WB, ELISA
<b>Concentration</b>	1 mg/ml
<b>Full name</b>	Nrf3 Antibody
<b>Synonyms</b>	NFE2L3; NRF3; Nuclear factor erythroid 2-related factor 3; NF-E2-related factor 3; NFE2-related factor 3; Nuclear factor; erythroid derived 2, like 3

**This product is for research use only, not for use in human, therapeutic or diagnostic procedure.**

### Background

NFE2L3 encodes a member of the cap 'n' collar basic-region leucine zipper family of transcription factors. Nuclear factor, erythroid 2 like 3 heterodimerizes with small musculoaponeurotic fibrosarcoma factors to bind antioxidant response elements in target genes. Nuclear factor, erythroid 2 like 3 is a membrane bound glycoprotein that is targeted to the endoplasmic reticulum and the nuclear envelope. Pseudogenes of NFE2L3 are found on chromosomes 16, 17, and 18.

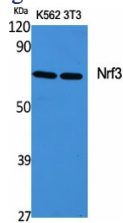
### Recommended Dilution

WB: 1: 500 - 1: 2000

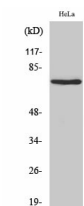
ELISA: 1: 10000

Not yet tested in other applications.

### Images



Western Blot analysis of various cells using Nrf3 Polyclonal Antibody cells nucleus.



Western Blot analysis of HeLa cells using Nrf3 Polyclonal Antibody cells nucleus.

## Storage

-20°C for one year

501 Changsheng S Rd, Nanhu Dist, Jiaxing, Zhejiang, China

Tel: 86 21 31007137 | E-mail: [save@bt-laboratory.com](mailto:save@bt-laboratory.com) | [www.bt-laboratory.com](http://www.bt-laboratory.com)