

## NRIP2 Polyclonal Antibody

### Description

<b>Product type</b>	Primary Antibody
<b>Code</b>	BT-AP06179
<b>Host</b>	Rabbit
<b>Isotype</b>	IgG
<b>Size</b>	20ul, 50ul, 100ul
<b>Immunogen</b>	The antiserum was produced against synthesized peptide derived from human NRIP2. AA range: 1-50
<b>Mol wt</b>	25851
<b>Species reactivity</b>	Human, Mouse
<b>Clonality</b>	Polyclonal
<b>Recommended application</b>	IHC-p, ELISA
<b>Concentration</b>	1 mg/ml
<b>Full name</b>	NRIP2 Antibody
<b>Synonyms</b>	NRIP2; Nuclear receptor-interacting protein 2

This product is for research use only, not for use in human, therapeutic or diagnostic procedure.

### Background

NRIP2 (Nuclear Receptor Interacting Protein 2) is a Protein Coding gene. GO annotations related to this gene include aspartic-type endopeptidase activity. An important paralog of this gene is NRIP3.

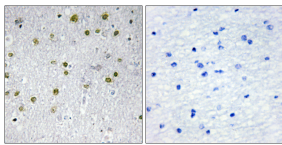
### Recommended Dilution

IHC: 1: 100 - 1: 300

ELISA: 1: 20000

Not yet tested in other applications.

### Images



Immunohistochemistry analysis of paraffin-embedded human brain tissue, using NRIP2 Antibody. The picture on the right is blocked with the synthesized peptide.

### Storage

-20°C for one year