

## Nrl Polyclonal Antibody

### Description

<b>Product type</b>	Primary Antibody
<b>Code</b>	BT-AP06182
<b>Host</b>	Rabbit
<b>Isotype</b>	IgG
<b>Size</b>	20ul, 50ul, 100ul
<b>Immunogen</b>	The antiserum was produced against synthesized peptide derived from human NRL. AA range:19-68
<b>Mol wt</b>	25940
<b>Species reactivity</b>	Human, Mouse
<b>Clonality</b>	Polyclonal
<b>Recommended application</b>	WB, ELISA
<b>Concentration</b>	1 mg/ml
<b>Full name</b>	Nrl Antibody
<b>Synonyms</b>	NRL; D14S46E; Neural retina-specific leucine zipper protein; NRL

**This product is for research use only, not for use in human, therapeutic or diagnostic procedure.**

### Background

NRL encodes a basic motif-leucine zipper transcription factor of the Maf subfamily. Neural retina leucine zipper is conserved among vertebrates and is a critical intrinsic regulator of photoreceptor development and function. Mutations in NRL have been associated with retinitis pigmentosa and retinal degenerative diseases.

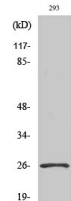
### Recommended Dilution

WB: 1: 500 - 1: 2000

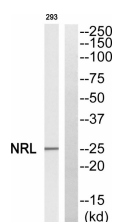
ELISA: 1: 10000

Not yet tested in other applications.

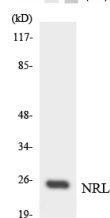
### Images



Western blot analysis of various cells using Nrl Polyclonal Antibody cells nucleus.



Western blot analysis of NRL Antibody. The lane on the right is blocked with the NRL peptide.



Western blot analysis of the lysates from HUVEC cells using NRL antibody.

## Storage

-20°C for one year

501 Changsheng S Rd, Nanhu Dist, Jiaxing, Zhejiang, China

Tel: 86 21 31007137 | E-mail: [save@bt-laboratory.com](mailto:save@bt-laboratory.com) | [www.bt-laboratory.com](http://www.bt-laboratory.com)