

NSF Polyclonal Antibody

Description

Product type	Primary Antibody
Code	BT-AP06190
Host	Rabbit
Isotype	IgG
Size	20ul, 50ul, 100ul
Immunogen	Synthesized peptide derived from NSF . at AA range: 110-190
Mol wt	82560
Species reactivity	Human, Mouse, Rat
Clonality	Polyclonal
Recommended application	WB, ELISA
Concentration	1 mg/ml
Full name	NSF Antibody
Synonyms	NSF; Vesicle-fusing ATPase; N-ethylmaleimide-sensitive fusion protein; NEM-sensitive fusion protein; Vesicular-fusion protein NSF

This product is for research use only, not for use in human, therapeutic or diagnostic procedure.

Background

The N-ethylmaleimide-sensitive fusion protein (NSF) is a 80 kDa cytosol protein that is expressed in all cell types. NSF functions as an ATPase and it is a part of the 20S membrane fusion apparatus with the vesicular SNAP receptor (v-SNARE) synaptobrevin, and the target SNAREs (t-SNARE) syntaxin and SNAP-25. With the hydrolysis of ATP by NSF, the released energy may set-up or drive membrane fusion processes. NSF is required for general membrane transport and trafficking.

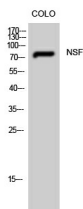
Recommended Dilution

WB: 1: 500 - 1: 2000

ELISA: 1: 40000

Not yet tested in other applications.

Images



Western Blot analysis of CoLo cells using NSF Polyclonal Antibody

Storage

-20°C for one year