

N-Shc Polyclonal Antibody

Description

Product type	Primary Antibody
Code	BT-AP06191
Host	Rabbit
Isotype	IgG
Size	20ul, 50ul, 100ul
Immunogen	The antiserum was produced against synthesized peptide derived from human SHC3. AA range:291-340
Mol wt	64056
Species reactivity	Human, Mouse, Rat
Clonality	Polyclonal
Recommended application	IHC-p, ELISA
Concentration	1 mg/ml
Full name	N-Shc Antibody
Synonyms	SHC3; NSHC; SHCC; SHC-transforming protein 3; Neuronal Shc; N-Shc; Protein Rai; SHC-transforming protein C; Src homology 2 domain-containing-transforming protein C3; SH2 domain protein C3

This product is for research use only, not for use in human, therapeutic or diagnostic procedure.

Background

SHC3 (SHC (Src Homology 2 Domain Containing) Transforming Protein 3) is a Protein Coding gene. Diseases associated with SHC3 include sclerosing hepatic carcinoma. Among its related pathways are Activated PKN1 stimulates transcription of AR (androgen receptor) regulated genes KLK2 and KLK3 and Bacterial invasion of epithelial cells. GO annotations related to this gene include protein kinase binding and receptor tyrosine kinase binding. An important paralog of this gene is SHC1.

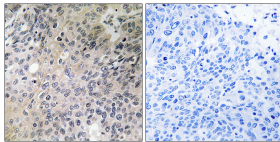
Recommended Dilution

IHC: 1: 100 - 1: 300

ELISA: 1: 10000

Not yet tested in other applications.

Images



Immunohistochemistry analysis of paraffin-embedded human lung carcinoma tissue, using SHC3 Antibody. The picture on the right is blocked with the synthesized peptide.

Storage

-20°C for one year