

## NT-4 Polyclonal Antibody

### Description

Product type	Primary Antibody
Code	BT-AP06194
Host	Rabbit
Isotype	IgG
Size	20ul, 50ul, 100ul
Immunogen	The antiserum was produced against synthesized peptide derived from human NT-4. AA range:71-120
Mol wt	22427
Species reactivity	Human, Mouse, Rat
Clonality	Polyclonal
Recommended application	IHC-p, ELISA
Concentration	1 mg/ml
Full name	NT-4 Antibody
Synonyms	NTF4; NTF5; Neurotrophin-4; NT-4; Neurotrophin-5; NT-5; Neurotrophic factor 4

This product is for research use only, not for use in human, therapeutic or diagnostic procedure.

### Background

NTF4 is a member of a family of neurotrophic factors, neurotrophins, that control survival and differentiation of mammalian neurons. The expression of NTF4 is ubiquitous and less influenced by environmental signals. While knock-outs of other neurotrophins including nerve growth factor, brain-derived neurotrophic factor, and neurotrophin 3 prove lethal during early postnatal development, NTF5-deficient mice only show minor cellular deficits and develop normally to adulthood.

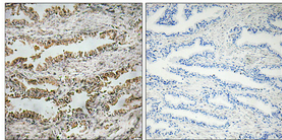
### Recommended Dilution

IHC: 1: 100 - 1: 300

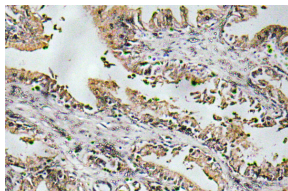
ELISA: 1: 10000

Not yet tested in other applications.

### Images



Immunohistochemical analysis of paraffin-embedded Human prostate cancer. Antibody was diluted at 1:100(4° overnight). High-pressure and temperature Tris-EDTA,pH8.0 was used for antigen retrieval. Negative contrl (right) obtained from antibody was pre-absorbed by immunogen peptide.



Immunohistochemistry analysis of NT-4 antibody in paraffin-embedded human prostate carcinoma tissue.

### Storage

-20°C for one year