

NT5C1A Polyclonal Antibody

Description

Product type	Primary Antibody
Code	BT-AP06195
Host	Rabbit
Isotype	IgG
Size	20ul, 50ul, 100ul
Immunogen	The antiserum was produced against synthesized peptide derived from human NT5C1A. AA range:151-200
Mol wt	41021
Species reactivity	Human, Mouse
Clonality	Polyclonal
Recommended application	WB, IF, ELISA
Concentration	1 mg/ml
Full name	NT5C1A Antibody
Synonyms	NT5C1A; Cytosolic 5'-nucleotidase 1A; cN1A; Cytosolic 5'-nucleotidase IA; cN-I; cN-IA

This product is for research use only, not for use in human, therapeutic or diagnostic procedure.

Background

NT5C1A (5'-Nucleotidase, Cytosolic IA) is a Protein Coding gene. Among its related pathways are Metabolism and NAD metabolism. GO annotations related to this gene include nucleotide binding and 5-nucleotidase activity. An important paralog of this gene is NT5C1B.

Recommended Dilution

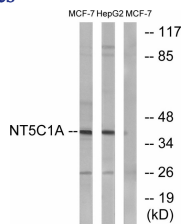
WB: 1: 500 - 1: 2000

IF: 1: 200 - 1: 1000

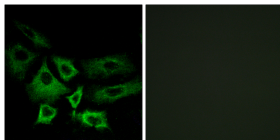
ELISA: 1: 20000

Not yet tested in other applications.

Images



Western blot analysis of lysates from MCF-7 and HepG2 cells, using NT5C1A Antibody. The lane on the right is blocked with the synthesized peptide.



Immunofluorescence analysis of A549 cells, using NT5C1A Antibody. The picture on the right is blocked with the synthesized peptide.

Storage

-20°C for one year