

NTE Polyclonal Antibody

Description

Product type	Primary Antibody
Code	BT-AP06199
Host	Rabbit
Isotype	IgG
Size	20ul, 50ul, 100ul
Immunogen	The antiserum was produced against synthesized peptide derived from human PNPLA6. AA range:102-151
Mol wt	149995
Species reactivity	Human, Mouse
Clonality	Polyclonal
Recommended application	WB, ELISA
Concentration	1 mg/ml
Full name	NTE Antibody
Synonyms	PNPLA6; NTE; Neuropathy target esterase; Patatin-like phospholipase domain-containing protein 6

This product is for research use only, not for use in human, therapeutic or diagnostic procedure.

Background

PNPLA6 encodes a phospholipase that deacetylates intracellular phosphatidylcholine to produce glycerophosphocholine. It is thought to function in neurite outgrowth and process elongation during neuronal differentiation. The patatin like phospholipase domain containing 6 is anchored to the cytoplasmic face of the endoplasmic reticulum in both neurons and non-neuronal cells. Mutations in this gene result in autosomal recessive spastic paraplegia, and the protein is the target for neurodegeneration induced by organophosphorus compounds and chemical warfare agents. Multiple transcript variants encoding different isoforms have been found for this gene.

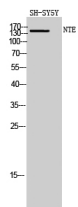
Recommended Dilution

WB: 1: 500 - 1: 2000

ELISA: 1: 20000

Not yet tested in other applications.

Images



Western Blot analysis of SH-SY5Y cells using NTE Polyclonal Antibody diluted at 1:500

Storage

-20°C for one year