

NTE Polyclonal Antibody

Description

Product type	Primary Antibody
Code	BT-AP06200
Host	Rabbit
Isotype	IgG
Size	20ul, 50ul, 100ul
Immunogen	The antiserum was produced against synthesized peptide derived from the Internal region of human PNPLA6. AA range:1031-1080
Mol wt	149995
Species reactivity	Human, Mouse, Rat
Clonality	Polyclonal
Recommended application	WB, IHC-p, ELISA
Concentration	1 mg/ml
Full name	NTE Antibody
Synonyms	PNPLA6; NTE; Neuropathy target esterase; Patatin-like phospholipase domain-containing protein 6

This product is for research use only, not for use in human, therapeutic or diagnostic procedure.

Background

PNPLA6 encodes a phospholipase that deacetylates intracellular phosphatidylcholine to produce glycerophosphocholine. It is thought to function in neurite outgrowth and process elongation during neuronal differentiation. The protein is anchored to the cytoplasmic face of the endoplasmic reticulum in both neurons and non-neuronal cells. Mutations in this gene result in autosomal recessive spastic paraplegia, and the protein is the target for neurodegeneration induced by organophosphorus compounds and chemical warfare agents. Multiple transcript variants encoding different isoforms have been found for this gene.

Recommended Dilution

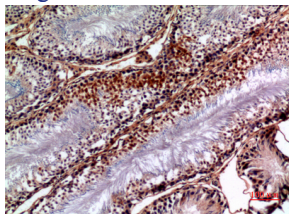
WB: 1: 500 - 1: 2000

IHC-p: 1: 100 - 1: 300

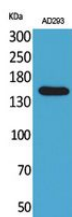
ELISA: 1: 20000

Not yet tested in other applications.

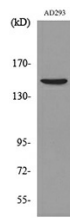
Images



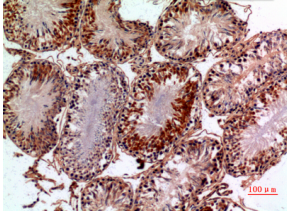
Immunohistochemical analysis of paraffin-embedded rat-testis, antibody was diluted at 1:100



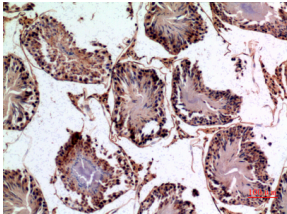
Western Blot analysis of AD293 cells using NTE Polyclonal Antibody. Secondary antibody was diluted at 1:20000



Western blot analysis of lysate from AD293 cells, using PNPLA6 Antibody.



Immunohistochemical analysis of paraffin-embedded rat-testis, antibody was diluted at 1:100



Immunohistochemical analysis of paraffin-embedded rat-testis, antibody was diluted at 1:100

Storage

-20°C for one year

501 Changsheng S Rd, Nanhu Dist, Jiaxing, Zhejiang, China

Tel: 86 21 31007137 | E-mail: save@bt-laboratory.com | www.bt-laboratory.com