

## NTF2 Polyclonal Antibody

### Description

<b>Product type</b>	Primary Antibody
<b>Code</b>	BT-AP06201
<b>Host</b>	Rabbit
<b>Isotype</b>	IgG
<b>Size</b>	20ul, 50ul, 100ul
<b>Immunogen</b>	The antiserum was produced against synthesized peptide derived from human NTF2. AA range:67-116
<b>Mol wt</b>	14478
<b>Species reactivity</b>	Human, Mouse, Rat
<b>Clonality</b>	Polyclonal
<b>Recommended application</b>	WB, IHC-p, ELISA
<b>Concentration</b>	1 mg/ml
<b>Full name</b>	NTF2 Antibody
<b>Synonyms</b>	NUTF2; NTF2; Nuclear transport factor 2; NTF-2; Placental protein 15; PP15

**This product is for research use only, not for use in human, therapeutic or diagnostic procedure.**

### Background

NUTF2 encodes a cytosolic factor that facilitates protein transport into the nucleus. The nuclear transport factor 2 is required for nuclear import of the small Ras-like GTPase, Ran which is involved in numerous cellular processes. This protein also interacts with the nuclear pore complex glycoprotein p62.

### Recommended Dilution

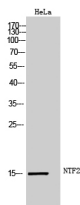
WB: 1: 500 - 1: 2000

IHC: 1: 100 - 1: 300

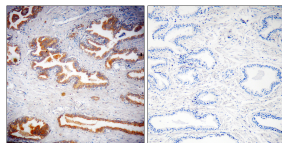
ELISA: 1: 20000

Not yet tested in other applications.

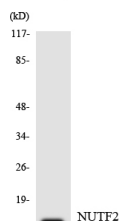
### Images



Western Blot analysis of HeLa cells using NTF2 Polyclonal Antibody

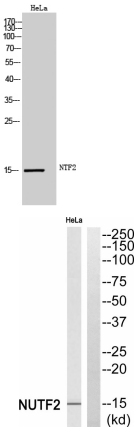


Immunohistochemistry analysis of paraffin-embedded human prostate, using NUTF2 Antibody. The lane on the right is blocked with the NUTF2 peptide.



Western blot analysis of the lysates from HT-29 cells using NUTF2 antibody.

Western Blot analysis of HeLa cells using NTF2 Polyclonal Antibody



Western blot analysis of NUTF2 Antibody. The lane on the right is blocked with the NUTF2 peptide.

Storage

-20°C for one year

501 Changsheng S Rd, Nanhu Dist, Jiaxing, Zhejiang, China  
Tel: 86 21 31007137 | E-mail: save@bt-laboratory.com | www.bt-laboratory.com