

## Alliinase Polyclonal Antibody

### Description

<b>Product type</b>	Primary Antibody
<b>Code</b>	BT-AP06202
<b>Host</b>	Rabbit
<b>Isotype</b>	IgG
<b>Size</b>	20ul, 50ul, 100ul
<b>Immunogen</b>	Purified Protein
<b>Mol wt</b>	N/A
<b>Species reactivity</b>	AlliumsativumL
<b>Clonality</b>	Polyclonal
<b>Recommended application</b>	WB

### Concentration

### Full name

### Synonyms

This product is for research use only, not for use in human, therapeutic or diagnostic procedure.

### Background

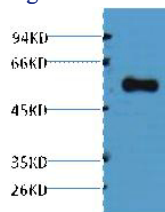
Alliinase are found in plants of the genus *Allium*, such as garlic and onions. Alliinase is responsible for catalyzing chemical reactions that produce the volatile chemicals that give these foods their flavors, odors, and tear-inducing properties. Alliinases are part of the plant's defense against herbivores. Alliinase is normally sequestered within a plant cell, but, when the plant is damaged by a feeding animal, the alliinase is released to catalyze the production of the pungent chemicals. This tends to have a deterrent effect on the animal. The same reaction occurs when onion or garlic is cut with a knife in the kitchen.

### Recommended Dilution

WB: 1: 3000

Not yet tested in other applications.

### Images



Western blot analysis of purified alliinase, diluted at 1:5000. Secondary antibody was diluted at 1:20000

### Storage

-20°C for 1 year