

NTN Polyclonal Antibody

Description

Product type	Primary Antibody
Code	BT-AP06203
Host	Rabbit
Isotype	IgG
Size	20ul, 50ul, 100ul
Immunogen	The antiserum was produced against synthesized peptide derived from the Internal region of human NRTN. AA range:111-160
Mol wt	22405
Species reactivity	Human
Clonality	Polyclonal
Recommended application	WB, ELISA
Concentration	1 mg/ml
Full name	NTN Antibody
Synonyms	NRTN; Neurturin

This product is for research use only, not for use in human, therapeutic or diagnostic procedure.

Background

NRTN encodes a secreted ligand of the TGF-beta (transforming growth factor-beta) superfamily of proteins. The encoded preproprotein is proteolytically processed to generate the mature protein. Neurturin signals through the RET receptor tyrosine kinase and a GPI-linked coreceptor, and promotes survival of neuronal populations. A neurturin mutation has been described in a family with Hirschsprung Disease.

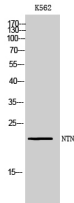
Recommended Dilution

WB: 1: 500 - 1: 2000

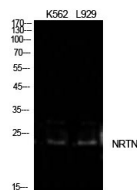
ELISA: 1: 10000

Not yet tested in other applications.

Images



Western Blot analysis of K562 cells using NTN Polyclonal Antibody diluted at 1:1000. Secondary antibody was diluted at 1:20000



Western Blot analysis of K562, L929 cells using NTN Polyclonal Antibody. Antibody was diluted at 1:1000. Secondary antibody was diluted at 1:20000

Storage

-20°C for one year

501 Changsheng S Rd, Nanhu Dist, Jiaxing, Zhejiang, China

Tel: 86 21 31007137 | E-mail: save@bt-laboratory.com | www.bt-laboratory.com