

NTPase Polyclonal Antibody

Description

Product type	Primary Antibody
Code	BT-AP06204
Host	Rabbit
Isotype	IgG
Size	20ul, 50ul, 100ul
Immunogen	The antiserum was produced against synthesized peptide derived from human C1orf57. AA range:141-190
Mol wt	20713
Species reactivity	Human
Clonality	Polyclonal
Recommended application	WB, IHC-p, ELISA
Concentration	1 mg/ml
Full name	NTPase Antibody
Synonyms	NTPCR; C1orf57; Cancer-related nucleoside-triphosphatase; NTPase; Nucleoside triphosphate phosphohydrolase

This product is for research use only, not for use in human, therapeutic or diagnostic procedure.

Background

Nucleoside-triphosphatase, cancer-related encoded by NTPCR is a non-specific nucleoside triphosphatase that is slow-acting in vitro. NTPCR is overexpressed in many tumor tissues, and while it is not essential for the cell, overexpression is cytotoxic. However, the cytotoxicity is not related to its triphosphatase activity.

Recommended Dilution

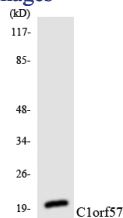
WB: 1: 500 - 1: 2000

IHC: 1: 100 - 1: 300

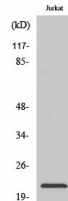
ELISA: 1: 40000

Not yet tested in other applications.

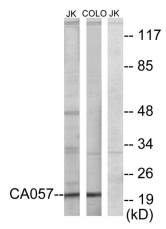
Images



Western blot analysis of the lysates from HUVEC cells using C1orf57 antibody.



Western Blot analysis of various cells using NTPase Polyclonal Antibody



Western blot analysis of lysates from Jurkat and COLO205 cells, using C1orf57 Antibody. The lane on the right is blocked with the synthesized peptide.

Storage

-20°C for one year

501 Changsheng S Rd, Nanhu Dist, Jiaxing, Zhejiang, China

Tel: 86 21 31007137 | E-mail: save@bt-laboratory.com | www.bt-laboratory.com