

NTR1 Polyclonal Antibody

Description

Product type	Primary Antibody
Code	BT-AP06205
Host	Rabbit
Isotype	IgG
Size	20ul, 50ul, 100ul
Immunogen	The antiserum was produced against synthesized peptide derived from human NTR1. AA range:181-230
Mol wt	46259
Species reactivity	Human, Mouse
Clonality	Polyclonal
Recommended application	WB, IHC-p, IF, ELISA
Concentration	1 mg/ml
Full name	NTR1 Antibody
Synonyms	NTSR1; NTRR; Neurotensin receptor type 1; NT-R-1; NTR1; High-affinity levocabastine-insensitive neurotensin receptor; NTRH

This product is for research use only, not for use in human, therapeutic or diagnostic procedure.

Background

Neurotensin receptor 1 belongs to the large superfamily of G-protein coupled receptors. NTSR1 mediates the multiple functions of neurotensin, such as hypotension, hyperglycemia, hypothermia, antinociception, and regulation of intestinal motility and secretion.

Recommended Dilution

WB: 1: 500 - 1: 2000

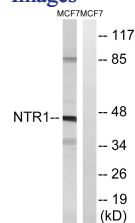
IHC: 1: 100 - 1: 300

IF: 1: 200 - 1: 1000

ELISA: 1: 5000

Not yet tested in other applications.

Images



Western blot analysis of lysates from MCF7 cells, using NTR1 Antibody. The lane on the right is blocked with the synthesized peptide.

Storage

-20°C for one year