

## NTR2 Polyclonal Antibody

### Description

|                                |  |
|--------------------------------|--|
| <b>Product type</b>            | Primary Antibody   |
| <b>Code</b>                    | BT-AP06206   |
| <b>Host</b>                    | Rabbit   |
| <b>Isotype</b>                 | IgG  |
| <b>Size</b>                    | 20ul, 50ul, 100ul  |
| <b>Immunogen</b>               | The antiserum was produced against synthesized peptide derived from human NTR2. AA range:151-200 |
| <b>Mol wt</b>                  | 45413  |
| <b>Species reactivity</b>      | Human, Mouse, Rat  |
| <b>Clonality</b>               | Polyclonal   |
| <b>Recommended application</b> | WB, IHC-p, IF, ELISA   |
| <b>Concentration</b>           | 1 mg/ml  |
| <b>Full name</b>               | NTR2 Antibody  |
| <b>Synonyms</b>                | NTSR2; Neurotensin receptor type 2; NT-R-2; NTR2; Levocabastine-sensitive neurotensin receptor   |

**This product is for research use only, not for use in human, therapeutic or diagnostic procedure.**

### Background

The neurotensin receptor 2 encoded by NTSR2 belongs to the G protein-coupled receptor family that activate a phosphatidylinositol-calcium second messenger system. Binding and pharmacological studies demonstrate that this receptor binds neurotensin as well as several other ligands already described for neurotensin NT1 receptor. However, unlike NT1 receptor, this gene recognizes, with high affinity, levocabastine, a histamine H1 receptor antagonist previously shown to compete with neurotensin for low-affinity binding sites in brain. These activities suggest that this receptor may be of physiological importance and that a natural agonist for the receptor may exist.

### Recommended Dilution

WB: 1: 500 - 1: 2000

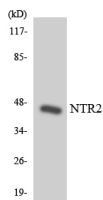
IHC: 1: 100 - 1: 300

IF: 1: 200 - 1: 1000

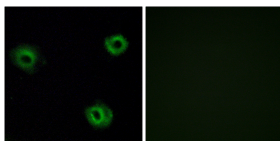
ELISA: 1: 40000

Not yet tested in other applications.

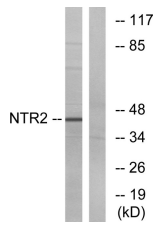
### Images



Western blot analysis of the lysates from HeLa cells using NTR2 antibody.



Immunofluorescence analysis of A549 cells, using NTR2 Antibody. The picture on the right is blocked with the synthesized peptide.



Western blot analysis of lysates from Jurkat cells, using NTR2 Antibody. The lane on the right is blocked with the synthesized peptide.

### Storage

-20°C for one year

501 Changsheng S Rd, Nanhu Dist, Jiaxing, Zhejiang, China

Tel: 86 21 31007137 | E-mail: [save@bt-laboratory.com](mailto:save@bt-laboratory.com) | [www.bt-laboratory.com](http://www.bt-laboratory.com)