

## NTT4 Polyclonal Antibody

### Description

<b>Product type</b>	Primary Antibody
<b>Code</b>	BT-AP06207
<b>Host</b>	Rabbit
<b>Isotype</b>	IgG
<b>Size</b>	20ul, 50ul, 100ul
<b>Immunogen</b>	Synthesized peptide derived from NTT4 . at AA range: 240-320
<b>Mol wt</b>	81001
<b>Species reactivity</b>	Human, Mouse, Rat
<b>Clonality</b>	Polyclonal
<b>Recommended application</b>	WB, ELISA
<b>Concentration</b>	1 mg/ml
<b>Full name</b>	NTT4 Antibody
<b>Synonyms</b>	SLC6A17; NTT4; Sodium-dependent neutral amino acid transporter SLC6A17; Sodium-dependent neurotransmitter transporter NTT4; Solute carrier family 6 member 17

**This product is for research use only, not for use in human, therapeutic or diagnostic procedure.**

### Background

The SLC6 family of proteins, which includes SLC6A17, acts as specific transporters for neurotransmitters, amino acids, and osmolytes like betaine, taurine, and creatine. SLC6 proteins are sodium cotransporters that derive the energy for solute transport from the electrochemical gradient for sodium ions.

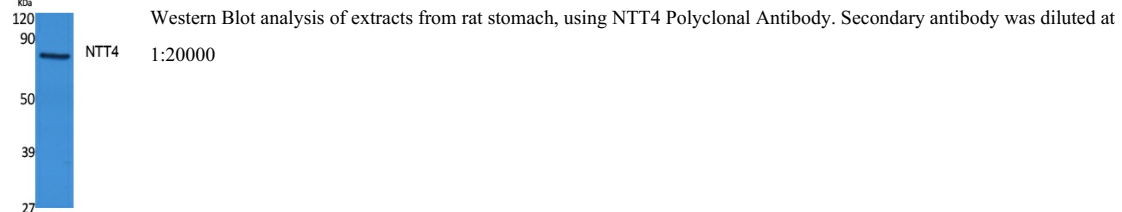
### Recommended Dilution

WB: 1: 500 - 1: 2000

ELISA: 1: 5000

Not yet tested in other applications.

### Images



### Storage

-20°C for one year