

AMBP Polyclonal Antibody

Description

Product type	Primary Antibody
Code	BT-AP06217
Host	Rabbit
Isotype	IgG
Size	20ul, 50ul, 100ul
Immunogen	Synthesized peptide derived from part region of human protein
Mol wt	N/A
Species reactivity	Human, Rat, Mouse
Clonality	Polyclonal
Recommended application	WB, ELISA
Concentration	1 mg/ml
Full name	Protein AMBP [Cleaved into: Alpha-1-microglobulin
Synonyms	Protein AMBP [Cleaved into: Alpha-1-microglobulin ;Protein HC;Alpha-1 microglycoprotein;Complex-forming glycoprotein heterogeneous in charge; Inter-alpha-trypsin inhibitor light chain ;ITI-LC;B

This product is for research use only, not for use in human, therapeutic or diagnostic procedure.

Background

This gene encodes a complex glycoprotein secreted in plasma. The precursor is proteolytically processed into distinct functioning proteins: alpha-1-microglobulin, which belongs to the superfamily of lipocalin transport proteins and may play a role in the regulation of inflammatory processes, and bikunin, which is a urinary trypsin inhibitor belonging to the superfamily of Kunitz-type protease inhibitors and plays an important role in many physiological and pathological processes. This gene is located on chromosome 9 in a cluster of lipocalin genes.

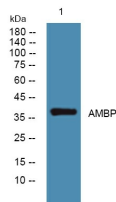
Recommended Dilution

WB: 1: 500 - 1: 2000

ELISA: 1: 5000 - 1: 20000

Not yet tested in other applications.

Images



Western blot analysis of lysates from KB cells, primary antibody was diluted at 1:1000, 4°C overnight

Storage

-20°C for 1 year