

NUB1 Polyclonal Antibody

Description

Product type	Primary Antibody
Code	BT-AP06221
Host	Rabbit
Isotype	IgG
Size	20ul, 50ul, 100ul
Immunogen	The antiserum was produced against synthesized peptide derived from human NYREN18. AA range:566-615
Mol wt	70538
Species reactivity	Human, Mouse, Monkey
Clonality	Polyclonal
Recommended application	WB, IHC-p, ELISA
Concentration	1 mg/ml
Full name	NUB1 Antibody
Synonyms	NUB1; NYREN18; NEDD8 ultimate buster 1; Negative regulator of ubiquitin-like proteins 1; Renal carcinoma antigen NY-REN-18

This product is for research use only, not for use in human, therapeutic or diagnostic procedure.

Background

NUB1 encodes a protein that functions as a negative regulator of NEDD8, a ubiquitin-like protein that conjugates with cullin family members in order to regulate vital biological events. Negative regulator of ubiquitin like proteins 1 encoded by NUB1 regulates the NEDD8 conjugation system post-transcriptionally by recruiting NEDD8 and its conjugates to the proteasome for degradation. Negative regulator of ubiquitin like proteins 1 interacts with the product of the AIPL1 gene, which is associated with Leber congenital amaurosis, an inherited retinopathy, and mutations in that gene can abolish interaction with negative regulator of ubiquitin like proteins 1, which may contribute to the pathogenesis. Negative regulator of ubiquitin like proteins 1 is also known to accumulate in Lewy bodies in Parkinson's disease and dementia with Lewy bodies, and in glial cytoplasmic inclusions in multiple system atrophy, with this abnormal accumulation being specific to alpha-synucleinopathy lesions. Alternative splicing of NUB1 results in multiple transcript variants.

Recommended Dilution

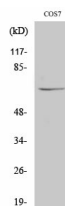
WB: 1: 500 - 1: 2000

IHC: 1: 100 - 1: 300

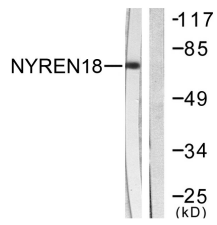
ELISA: 1: 20000

Not yet tested in other applications.

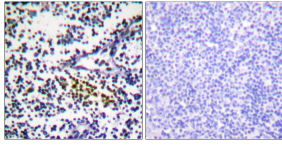
Images



Western Blot analysis of various cells using NUB1 Polyclonal Antibody diluted at 1:2000 cells nucleus.



Western blot analysis of lysates from COS7 cells, using NYREN18 Antibody. The lane on the right is blocked with the synthesized peptide.



Immunohistochemistry analysis of paraffin-embedded human tonsil tissue, using NYREN18 Antibody. The picture on the right is blocked with the synthesized peptide.

Storage

-20°C for one year

501 Changsheng S Rd, Nanhu Dist, Jiaxing, Zhejiang, China

Tel: 86 21 31007137 | E-mail: save@bt-laboratory.com | www.bt-laboratory.com