

NUCKS Polyclonal Antibody

Description

Product type	Primary Antibody
Code	BT-AP06223
Host	Rabbit
Isotype	IgG
Size	20ul, 50ul, 100ul
Immunogen	The antiserum was produced against synthesized peptide derived from human NUCKS1. AA range:28-77
Mol wt	27296
Species reactivity	Human, Mouse, Rat
Clonality	Polyclonal
Recommended application	IHC-p, ELISA
Concentration	1 mg/ml
Full name	NUCKS Antibody
Synonyms	NUCKS1; NUCKS; JC7; Nuclear ubiquitous casein and cyclin-dependent kinase substrate 1; P1

This product is for research use only, not for use in human, therapeutic or diagnostic procedure.

Background

NUCKS1 (nuclear casein kinase and cyclin dependent kinase substrate 1) encodes a nuclear protein that is highly conserved in vertebrates. The conserved regions of the protein contain several consensus phosphorylation sites for casein kinase II and cyclin-dependent kinases, two putative nuclear localization signals, and a basic DNA-binding domain. It is phosphorylated *in vivo* by Cdk1 during mitosis of the cell cycle.

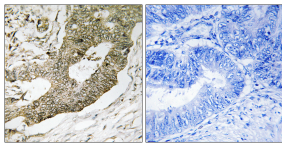
Recommended Dilution

IHC: 1: 100 - 1: 300

ELISA: 1: 10000

Not yet tested in other applications.

Images



Immunohistochemistry analysis of paraffin-embedded human colon carcinoma tissue, using NUCKS1 Antibody. The picture on the right is blocked with the synthesized peptide.

Storage

-20°C for one year

501 Changsheng S Rd, Nanhu Dist, Jiaxing, Zhejiang, China

Tel: 86 21 31007137 | E-mail: save@bt-laboratory.com | www.bt-laboratory.com