

## Nucleophosmin Polyclonal Antibody

### Description

<b>Product type</b>	Primary Antibody
<b>Code</b>	BT-AP06225
<b>Host</b>	Rabbit
<b>Isotype</b>	IgG
<b>Size</b>	20ul, 50ul, 100ul
<b>Immunogen</b>	The antiserum was produced against synthesized peptide derived from human NPM. AA range:1-50
<b>Mol wt</b>	32575
<b>Species reactivity</b>	Human, Mouse, Rat, Monkey
<b>Clonality</b>	Polyclonal
<b>Recommended application</b>	WB, IHC-p, ELISA
<b>Concentration</b>	1 mg/ml
<b>Full name</b>	Nucleophosmin Antibody
<b>Synonyms</b>	NPM1; NPM; Nucleophosmin; NPM; Nucleolar phosphoprotein B23; Nucleolar protein NO38; Numatrin

**This product is for research use only, not for use in human, therapeutic or diagnostic procedure.**

### Background

NPM1 encodes a phosphoprotein which moves between the nucleus and the cytoplasm. The gene product is thought to be involved in several processes including regulation of the ARF/p53 pathway. A number of genes are fusion partners have been characterized, in particular the anaplastic lymphoma kinase gene on chromosome 2. Mutations in NPM1 are associated with acute myeloid leukemia. More than a dozen pseudogenes of NPM1 have been identified. Alternative splicing results in multiple transcript variants.

### Recommended Dilution

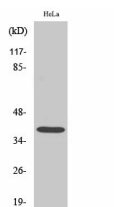
WB: 1: 500 - 1: 2000

IHC: 1: 100 - 1: 300

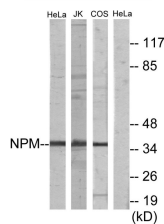
ELISA: 1: 10000

Not yet tested in other applications.

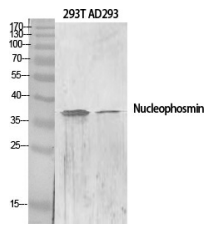
### Images



Western Blot analysis of COS7 cells using Nucleophosmin Polyclonal Antibody diluted at 1:2000



Western blot analysis of lysates from HeLa, Jurkat, and COS7 cells, using NPM Antibody. The lane on the right is blocked with the synthesized peptide.



Western Blot analysis of various cells using Nucleophosmin Polyclonal Antibody diluted at 1:2000

### Storage

-20°C for one year

501 Changsheng S Rd, Nanhu Dist, Jiaxing, Zhejiang, China

Tel: 86 21 31007137 | E-mail: [save@bt-laboratory.com](mailto:save@bt-laboratory.com) | [www.bt-laboratory.com](http://www.bt-laboratory.com)