

## NUDC Polyclonal Antibody

### Description

<b>Product type</b>	Primary Antibody
<b>Code</b>	BT-AP06227
<b>Host</b>	Rabbit
<b>Isotype</b>	IgG
<b>Size</b>	20ul, 50ul, 100ul
<b>Immunogen</b>	The antiserum was produced against synthesized peptide derived from human NudC. AA range:282-331
<b>Mol wt</b>	38243
<b>Species reactivity</b>	Human, Mouse, Rat
<b>Clonality</b>	Polyclonal
<b>Recommended application</b>	WB, IHC-p, ELISA
<b>Concentration</b>	1 mg/ml
<b>Full name</b>	NUDC Antibody
<b>Synonyms</b>	NUDC; Nuclear migration protein nudC; Nuclear distribution protein C homolog

**This product is for research use only, not for use in human, therapeutic or diagnostic procedure.**

### Background

NUDC encodes nuclear distribution C, dynein complex regulator that plays an essential role in mitosis and cytokinesis. The encoded protein is involved in spindle formation during mitosis and in microtubule organization during cytokinesis. Pseudogenes of this gene are found on chromosome 2.

### Recommended Dilution

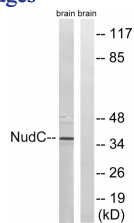
WB: 1: 500 - 1: 2000

IHC: 1: 100 - 1: 300

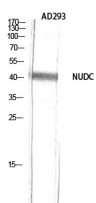
ELISA: 1: 10000

Not yet tested in other applications.

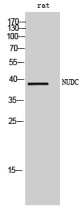
### Images



Western blot analysis of lysates from rat brain cells, using NudC Antibody. The lane on the right is blocked with the synthesized peptide.



Western Blot analysis of AD293 using NUDC Polyclonal Antibody diluted at 1:2000



Western Blot analysis of rat cells using NUDC Polyclonal Antibody diluted at 1:2000

### Storage

-20°C for one year

501 Changsheng S Rd, Nanhu Dist, Jiaxing, Zhejiang, China

Tel: 86 21 31007137 | E-mail: [save@bt-laboratory.com](mailto:save@bt-laboratory.com) | [www.bt-laboratory.com](http://www.bt-laboratory.com)