

ATX3L Rabbit Polyclonal Antibody

Description

Product type	Primary Antibody
Code	BT-AP06229
Host	Rabbit
Isotype	IgG
Size	100ul, 50ul, 20ul
Immunogen	Synthesized peptide derived from human ATX3L
Mol wt	N/A
Species reactivity	Human, Rat, Mouse
Clonality	Polyclonal
Recommended application	WB
Concentration	1 mg/ml
Full name	ATX3L
Synonyms	ATX3L; Putative ataxin-3-like protein; EC 3.4.19.12; Machado-Joseph disease protein 1-like)

This product is for research use only, not for use in human, therapeutic or diagnostic procedure.

Background

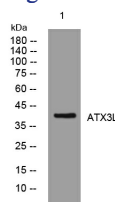
This intronless gene may be a pseudogene (PMID:11450850). This gene is similar to the multi-exon gene which encodes ataxin 3 and contains a coding region which could encode a protein similar to ataxin 3. Mutations in the gene encoding ataxin 3 are associated with Machado-Joseph disease.

Recommended Dilution

WB: 1: 500 - 1: 2000

Not yet tested in other applications.

Images



Western blot analysis of lysates from SW480 cells, primary antibody was diluted at 1:1000, 4°C overnight

Storage

-20°C for 1 year

501 Changsheng S Rd, Nanhu Dist, Jiaxing, Zhejiang, China

Tel: 86 21 31007137 | E-mail: save@bt-laboratory.com | www.bt-laboratory.com