

## NuMA Polyclonal Antibody

### Description

<b>Product type</b>	Primary Antibody
<b>Code</b>	BT-AP06231
<b>Host</b>	Rabbit
<b>Isotype</b>	IgG
<b>Size</b>	20ul, 50ul, 100ul
<b>Immunogen</b>	The antiserum was produced against synthesized peptide derived from human NUMA1. AA range:334-383
<b>Mol wt</b>	238260
<b>Species reactivity</b>	Human
<b>Clonality</b>	Polyclonal
<b>Recommended application</b>	WB, IHC-p, ELISA
<b>Concentration</b>	1 mg/ml
<b>Full name</b>	NuMA Antibody
<b>Synonyms</b>	NUMA1; NUMA; Nuclear mitotic apparatus protein 1; NuMA protein; SP-H antigen

**This product is for research use only, not for use in human, therapeutic or diagnostic procedure.**

### Background

NUMA1 encodes a large protein that forms a structural component of the nuclear matrix. The encoded protein interacts with microtubules and plays a role in the formation and organization of the mitotic spindle during cell division. Chromosomal translocation of NUMA1 with the RARA (retinoic acid receptor, alpha) gene on chromosome 17 have been detected in patients with acute promyelocytic leukemia. Alternative splicing results in multiple transcript variants.

### Recommended Dilution

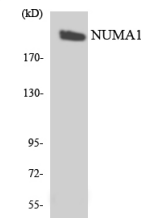
WB: 1: 500 - 1: 2000

IHC: 1: 100 - 1: 300

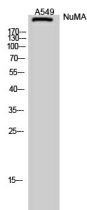
ELISA: 1: 5000

Not yet tested in other applications.

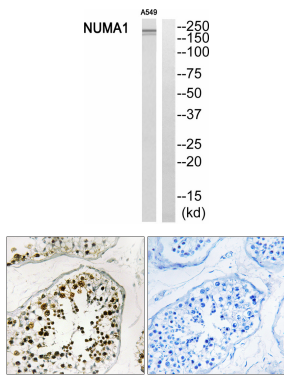
### Images



Western blot analysis of the lysates from K562 cells using NUMA1 antibody.



Western Blot analysis of A549 cells using NuMA Polyclonal Antibody diluted at 1:2000



Western blot analysis of NUMA1 Antibody. The lane on the right is blocked with the NUMA1 peptide.

Immunohistochemistry analysis of paraffin-embedded human testis, using NUMA1 Antibody. The lane on the right is blocked with the NUMA1 peptide.

### Storage

-20°C for one year

501 Changsheng S Rd, Nanhu Dist, Jiaxing, Zhejiang, China

Tel: 86 21 31007137 | E-mail: [save@bt-laboratory.com](mailto:save@bt-laboratory.com) | [www.bt-laboratory.com](http://www.bt-laboratory.com)