

Nup160 Polyclonal Antibody

Description

Product type	Primary Antibody
Code	BT-AP06233
Host	Rabbit
Isotype	IgG
Size	20ul, 50ul, 100ul
Immunogen	The antiserum was produced against synthesized peptide derived from human NUP160. AA range:392-441
Mol wt	149001
Species reactivity	Human, Mouse
Clonality	Polyclonal
Recommended application	WB, ELISA
Concentration	1 mg/ml
Full name	Nup160 Antibody
Synonyms	NUP160; KIAA0197; NUP120; Nuclear pore complex protein Nup160; 160 kDa nucleoporin; Nucleoporin Nup160

This product is for research use only, not for use in human, therapeutic or diagnostic procedure.

Background

NUP160 is 1 of up to 60 proteins that make up the 120-MD nuclear pore complex, which mediates nucleoplasmic transport.

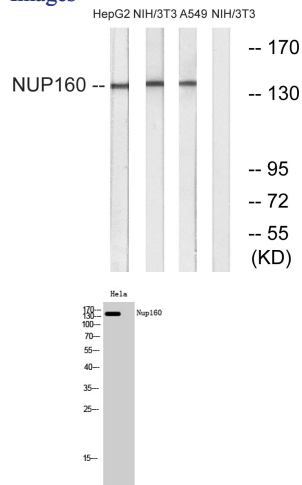
Recommended Dilution

WB: 1: 500 - 1: 2000

ELISA: 1: 20000

Not yet tested in other applications.

Images



Western blot analysis of lysates from NIH/3T3, A549, and HepG2 cells, using NUP160 Antibody. The lane on the right is blocked with the synthesized peptide.

Western Blot analysis of HeLa cells using Nup160 Polyclonal Antibody diluted at 1:2000 cells nucleus.

Storage

-20°C for one year

501 Changsheng S Rd, Nanhu Dist, Jiaxing, Zhejiang, China

Tel: 86 21 31007137 | E-mail: save@bt-laboratory.com | www.bt-laboratory.com