

Nup88 Polyclonal Antibody

Description

Product type	Primary Antibody
Code	BT-AP06235
Host	Rabbit
Isotype	IgG
Size	20ul, 50ul, 100ul
Immunogen	Synthesized peptide derived from Nup88 . at AA range: 330-410
Mol wt	83542
Species reactivity	Human, Mouse
Clonality	Polyclonal
Recommended application	WB, ELISA
Concentration	1 mg/ml
Full name	Nup88 Antibody
Synonyms	NUP88; Nuclear pore complex protein Nup88; 88 kDa nucleoporin; Nucleoporin Nup88

This product is for research use only, not for use in human, therapeutic or diagnostic procedure.

Background

The nuclear pore complex is a massive structure that extends across the nuclear envelope, forming a gateway that regulates the flow of macromolecules between the nucleus and the cytoplasm. Nucleoporins, a family of 50 to 100 proteins, are the main components of the nuclear pore complex in eukaryotic cells. Nuclear pore complex protein Nup88 encoded by NUP88 belongs to the nucleoporin family and is associated with the oncogenic nucleoporin CAN/Nup214 in a dynamic subcomplex. This protein is also overexpressed in a large number of malignant neoplasms and precancerous dysplasias. Alternative splicing results in multiple transcript variants encoding different isoforms.

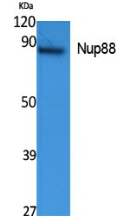
Recommended Dilution

WB: 1: 500 - 1: 2000

ELISA: 1: 20000

Not yet tested in other applications.

Images



Western Blot analysis of extracts from K562 cells, using Nup88 Polyclonal Antibody. Secondary antibody was diluted at 1:20000

Storage

-20°C for one year