

AMPM1 Polyclonal Antibody

Description

Product type	Primary Antibody
Code	BT-AP06247
Host	Rabbit
Isotype	IgG
Size	20ul, 50ul, 100ul
Immunogen	Synthesized peptide derived from part region of human protein
Mol wt	N/A
Species reactivity	Human, Mouse
Clonality	Polyclonal
Recommended application	WB, ELISA
Concentration	1 mg/ml
Full name	Methionine aminopeptidase 1
Synonyms	Methionine aminopeptidase 1 ;MAP 1;MetAP 1;EC 3.4.11.18;Peptidase M 1

This product is for research use only, not for use in human, therapeutic or diagnostic procedure.

Background

Catalytic activity:Release of N-terminal amino acids, preferentially methionine, from peptides and arylamides.,cofactor:Binds 1 sodium ion per subunit. The sodium ion has a structural role.,cofactor:Binds 2 cobalt ions per subunit.,cofactor:Binds 2 cobalt ions per subunit. The true nature of the physiological cofactor is under debate. The enzyme is also active with zinc, manganese or divalent iron ions.,Removes the amino-terminal methionine from nascent proteins.,Removes the amino-terminal methionine from nascent proteins. Required for normal progression through the cell cycle.,Belongs to the peptidase M24A family.,

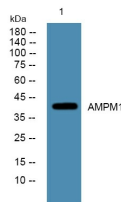
Recommended Dilution

WB: 1: 500 - 1: 2000

ELISA: 1: 5000 - 1: 20000

Not yet tested in other applications.

Images



Western blot analysis of lysates from K562 cells, primary antibody was diluted at 1:1000, 4°C overnight

Storage

-20°C for 1 year