

FKHRL1 Polyclonal Antibody

Description

Product type	Primary Antibody
Code	BT-AP06258
Host	Rabbit
Isotype	IgG
Size	100ul, 50ul, 20ul
Immunogen	Synthesized peptide derived from human FKHRL1 Polyclonal
Mol wt	N/A
Species reactivity	Human, Mouse, Rat
Clonality	Polyclonal
Recommended application	WB, ELISA
Concentration	1 mg/ml
Full name	Forkhead box protein O3
Synonyms	Forkhead box protein O3 (AF6q21 protein;Forkhead in rhabdomyosarcoma-like 1; Forkhead box protein O3; AF6q21 protein; Forkhead in rhabdomyosarcoma-like 1)

This product is for research use only, not for use in human, therapeutic or diagnostic procedure.

Background

This gene belongs to the forkhead family of transcription factors which are characterized by a distinct forkhead domain. This gene likely functions as a trigger for apoptosis through expression of genes necessary for cell death. Translocation of this gene with the MLL gene is associated with secondary acute leukemia. Alternatively spliced transcript variants encoding the same protein have been observed.

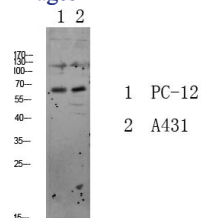
Recommended Dilution

WB: 1: 500 - 1: 2000

ELISA: 1: 10000 - 1: 20000

Not yet tested in other applications.

Images



Storage

-20°C for 1 year