

Flg(Phospho Tyr654) Polyclonal Antibody

Description

Product type	Primary Antibody
Code	BT-AP06261
Host	Rabbit
Isotype	IgG
Size	100ul, 50ul, 20ul
Immunogen	The antiserum was produced against synthesized peptide derived from human FGFR1 around the phosphorylation site of Tyr654. AA range:626-675
Mol wt	91868
Species reactivity	Human, Mouse, Rat
Clonality	Polyclonal
Recommended application	WB, IF, ICC, ELISA
Concentration	1 mg/ml
Full name	Fibroblast growth factor receptor 1
Synonyms	Fibroblast growth factor receptor 1; FGFR1; BFGFR; CEK; FGFBR; FLG; FLT2; HBGFR; Fibroblast growth factor receptor 1; FGFR-1; Basic fibroblast growth factor receptor 1; BFGFR; bFGF-R-1; Fms-like tyrosine kinase 2; FLT-2; N-sam; Proto-oncogene c-Fgr; CD antigen CD331

This product is for research use only, not for use in human, therapeutic or diagnostic procedure.

Background

The protein encoded by this gene is a member of the fibroblast growth factor receptor (FGFR) family, where amino acid sequence is highly conserved between members and throughout evolution. FGFR family members differ from one another in their ligand affinities and tissue distribution. A full-length representative protein consists of an extracellular region, composed of three immunoglobulin-like domains, a single hydrophobic membrane-spanning segment and a cytoplasmic tyrosine kinase domain. The extracellular portion of the protein interacts with fibroblast growth factors, setting in motion a cascade of downstream signals, ultimately influencing mitogenesis and differentiation. This particular family member binds both acidic and basic fibroblast growth factors and is involved in limb induction. Mutations in this gene have been associated with Pfeiffer syndrome, Jackson-Weiss syndrome,

Recommended Dilution

WB: 1: 500 - 1: 2000

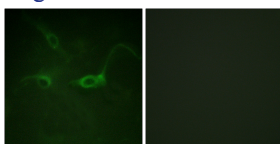
IF: 1: 200 - 1: 1000

ICC: 1: 200 - 1: 1000

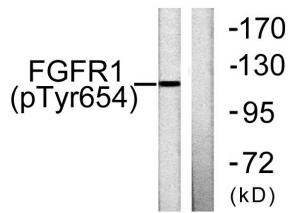
ELISA: 1: 20000

Not yet tested in other applications.

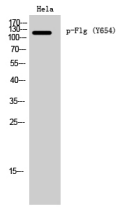
Images



Immunofluorescence analysis of COS7 cells, using FGFR1 (Phospho-Tyr654) Antibody. The picture on the right is blocked with the phospho peptide.



Western Blot analysis of HeLa cells using Phospho-Flg (Y654) Polyclonal Antibody diluted at 1:1000



Western blot analysis of lysates from 293 cells treated with Insulin 0.01U/ml 15', using FGFR1 (Phospho-Tyr654) Antibody. The lane on the right is blocked with the phospho peptide.

Storage

-20°C for 1 year

501 Changsheng S Rd, Nanhui Dist, Jiaxing, Zhejiang, China

Tel: 86 21 31007137 | E-mail: save@bt-laboratory.com | www.bt-laboratory.com