

Flt-1(Phospho Tyr1048) Polyclonal Antibody

Description

Product type	Primary Antibody
Code	BT-AP06262
Host	Rabbit
Isotype	IgG
Size	100ul, 50ul, 20ul
Immunogen	The antiserum was produced against synthesized peptide derived from human VEGFR1 around the phosphorylation site of Tyr1048. AA range:1016-1065
Mol wt	150769
Species reactivity	Human, Mouse, Rat
Clonality	Polyclonal
Recommended application	WB, IHC-p, IF, ELISA
Concentration	1 mg/ml
Full name	Vascular endothelial growth factor receptor 1
Synonyms	Vascular endothelial growth factor receptor 1; FLT1; FLT; FRT; VEGFR1; Vascular endothelial growth factor receptor 1; VEGFR-1; Fms-like tyrosine kinase 1; FLT-1; Tyrosine-protein kinase FRT; Tyrosine-protein kinase receptor FLT; FLT; Vascular permeability factor receptor

This product is for research use only, not for use in human, therapeutic or diagnostic procedure.

Background

This gene encodes a member of the vascular endothelial growth factor receptor (VEGFR) family. VEGFR family members are receptor tyrosine kinases (RTKs) which contain an extracellular ligand-binding region with seven immunoglobulin (Ig)-like domains, a transmembrane segment, and a tyrosine kinase (TK) domain within the cytoplasmic domain. This protein binds to VEGFR-A, VEGFR-B and placental growth factor and plays an important role in angiogenesis and vasculogenesis. Expression of this receptor is found in vascular endothelial cells, placental trophoblast cells and peripheral blood monocytes. Multiple transcript variants encoding different isoforms have been found for this gene. Isoforms include a full-length transmembrane receptor isoform and shortened, soluble isoforms. The soluble isoforms are associated with the onset of pre-eclampsia.

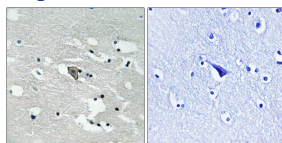
Recommended Dilution

IHC-p: 1: 100 - 1: 300

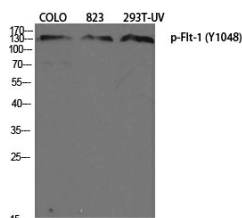
ELISA: 1: 5000

Not yet tested in other applications.

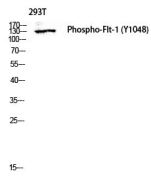
Images



Immunohistochemistry analysis of paraffin-embedded human brain, using VEGFR1 (Phospho-Tyr1048) Antibody. The picture on the right is blocked with the phospho peptide.



Western Blot analysis of various cells using Phospho-Flt-1 (Y1048) Polyclonal Antibody diluted at 1:1000



Western blot analysis of 293T lysis using Phospho-Flt-1 (Y1048) antibody. Antibody was diluted at 1:1000

Storage

-20°C for 1 year

501 Changsheng S Rd, Nanhu Dist, Jiaxing, Zhejiang, China

Tel: 86 21 31007137 | E-mail: save@bt-laboratory.com | www.bt-laboratory.com