

Fusin Polyclonal Antibody

Description

Product type	Primary Antibody
Code	BT-AP06292
Host	Rabbit
Isotype	IgG
Size	100ul, 50ul, 20ul
Immunogen	The antiserum was produced against synthesized peptide derived from human CXCR4. AA range:300-349
Mol wt	39746
Species reactivity	Human, Mouse, Rat
Clonality	Polyclonal
Recommended application	WB, IF, ICC, ELISA
Concentration	1 mg/ml
Full name	C-X-C chemokine receptor type 4
Synonyms	C-X-C chemokine receptor type 4; CXCR4; C-X-C chemokine receptor type 4; CXC-R4; CXCR-4; FB22; Fusin; HM89; LCR1; Leukocyte-derived seven transmembrane domain receptor; LESTR; NPYRL; Stromal cell-derived factor 1 receptor; SDF-1 receptor; CD antigen CD184

This product is for research use only, not for use in human, therapeutic or diagnostic procedure.

Background

This gene encodes a CXC chemokine receptor specific for stromal cell-derived factor-1. The protein has 7 transmembrane regions and is located on the cell surface. It acts with the CD4 protein to support HIV entry into cells and is also highly expressed in breast cancer cells. Mutations in this gene have been associated with WHIM (warts, hypogammaglobulinemia, infections, and myelokathexis) syndrome. Alternate transcriptional splice variants, encoding different isoforms, have been characterized.

Recommended Dilution

WB: 1: 500 - 1: 2000

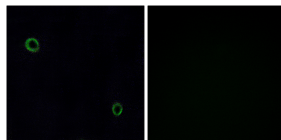
IF: 1: 200 - 1: 1000

ICC: 1: 200 - 1: 1000

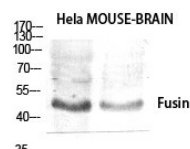
ELISA: 1: 40000

Not yet tested in other applications.

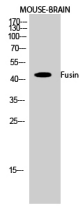
Images



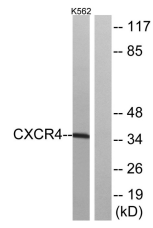
Immunofluorescence analysis of A549 cells, using CXCR4 Antibody. The picture on the right is blocked with the synthesized peptide.



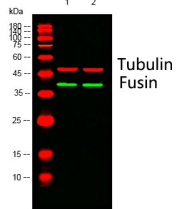
Western blot analysis of lysates from 1) HeLa, 2) mouse-brain cells, (Green) primary antibody was diluted at 1:1000, 4°C overnight, Dylight 800 secondary antibody was diluted at 1:10000, 37°C 1hour. (Red) Tubulin β Monoclonal Antibody(5G3) was diluted at 1:5000 as loading control, 4°C overnight, Dylight 680 secondary antibody was diluted at 1:10000, 37°C 1hour.



Western Blot analysis of various cells using Fusin Polyclonal Antibody diluted at 1:1000



Western Blot analysis of MOUSE-BRAIN cells using Fusin Polyclonal Antibody diluted at 1:1000



Western blot analysis of lysates from K562 cells, using CXCR4 Antibody. The lane on the right is blocked with the synthesized peptide.

Storage

-20°C for 1 year

501 Changsheng S Rd, Nanhu Dist, Jiaxing, Zhejiang, China

Tel: 86 21 31007137 | E-mail: save@bt-laboratory.com | www.bt-laboratory.com