

AP-1 Polyclonal Antibody

Description

Product type	Primary Antibody
Code	BT-AP06313
Host	Rabbit
Isotype	IgG
Size	20ul, 50ul, 100ul
Immunogen	The antiserum was produced against synthesized peptide derived from human c-Jun. AA range:58-107
Mol wt	35676
Species reactivity	Human, Mouse, Rat
Clonality	Polyclonal
Recommended application	IF, ICC, WB, IHC-p, IP, ELISA
Concentration	1 mg/ml
Full name	Transcription factor AP-1
Synonyms	Transcription factor AP-1; JUN; Transcription factor AP-1; Activator protein 1; AP1; Proto-oncogene c-Jun; V-jun avian sarcoma virus 17 oncogene homolog; p39

This product is for research use only, not for use in human, therapeutic or diagnostic procedure.

Background

This gene is the putative transforming gene of avian sarcoma virus 17. It encodes a protein which is highly similar to the viral protein, and which interacts directly with specific target DNA sequences to regulate gene expression. This gene is intronless and is mapped to 1p32-p31, a chromosomal region involved in both translocations and deletions in human malignancies.

Recommended Dilution

WB: 1: 500 - 1: 2000

IP: 2 - 5 ug: mg

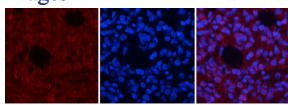
IHC-p: 1: 100 - 1: 300

IF: 1: 50 - 1: 200

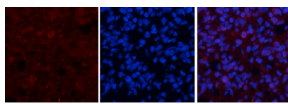
ELISA: 1: 20000

Not yet tested in other applications.

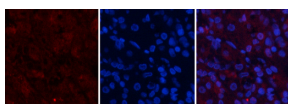
Images



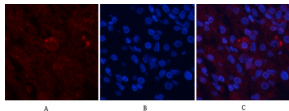
Immunofluorescence analysis of human-lung tissue. 1, AP-1 Polyclonal Antibody (Red) was diluted at 1:200 (4°C overnight). 2, Cy3 labeled Secondary antibody was diluted at 1:300 (room temperature, 50min). 3, Picture B: DAPI (blue) 10min. Picture A: Target. Picture B: DAPI. Picture C: merge of A+B



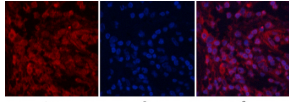
Immunofluorescence analysis of human-lung tissue. 1, AP-1 Polyclonal Antibody (Red) was diluted at 1:200 (4°C overnight). 2, Cy3 labeled Secondary antibody was diluted at 1:300 (room temperature, 50min). 3, Picture B: DAPI (blue) 10min. Picture A: Target. Picture B: DAPI. Picture C: merge of A+B



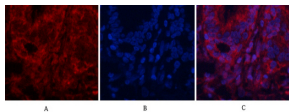
Immunofluorescence analysis of human-stomach tissue. 1, AP-1 Polyclonal Antibody (Red) was diluted at 1:200 (4°C overnight). 2, Cy3 labeled Secondary antibody was diluted at 1:300 (room temperature, 50min). 3, Picture B: DAPI (blue) 10min. Picture A: Target. Picture B: DAPI. Picture C: merge of A+B



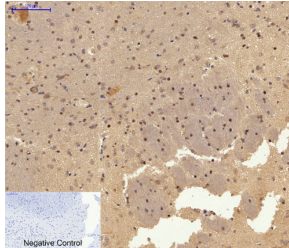
Immunofluorescence analysis of human-stomach tissue. 1,AP-1 Polyclonal Antibody(Red) was diluted at 1:200(4°C overnight). 2, Cy3 labeled Secondary antibody was diluted at 1:300(room temperature, 50min).3, Picture B: DAPI(blue) 10min. Picture A:Target. Picture B: DAPI. Picture C: merge of A+B



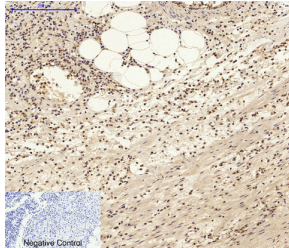
Immunofluorescence analysis of rat-lung tissue. 1,AP-1 Polyclonal Antibody(Red) was diluted at 1:200(4°C overnight). 2, Cy3 labeled Secondary antibody was diluted at 1:300(room temperature, 50min).3, Picture B: DAPI(blue) 10min. Picture A:Target. Picture B: DAPI. Picture C: merge of A+B



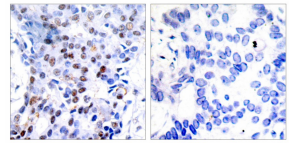
Immunofluorescence analysis of rat-lung tissue. 1,AP-1 Polyclonal Antibody(Red) was diluted at 1:200(4°C overnight). 2, Cy3 labeled Secondary antibody was diluted at 1:300(room temperature, 50min).3, Picture B: DAPI(blue) 10min. Picture A:Target. Picture B: DAPI. Picture C: merge of A+B



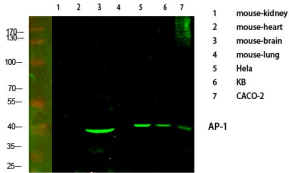
Immunohistochemical analysis of paraffin-embedded Human uterus. 1, Antibody was diluted at 1:100(4°C overnight). 2, High-pressure and temperature EDTA, pH8.0 was used for antigen retrieval. 3,Secondary antibody was diluted at 1:200(room temperature, 30min).



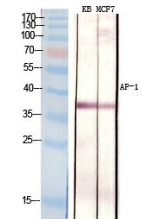
Immunohistochemical analysis of paraffin-embedded Rat-brain tissue. 1,AP-1 Polyclonal Antibody was diluted at 1:200(4°C overnight). 2, Sodium citrate pH 6.0 was used for antibody retrieval(>98°C,20min). 3,Secondary antibody was diluted at 1:200(room temperature, 30min). Negative control was used by secondary antibody only.



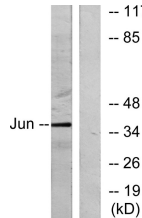
Immunohistochemistry analysis of paraffin-embedded human breast carcinoma tissue, using c-Jun Antibody. The picture on the right is blocked with the synthesized peptide.



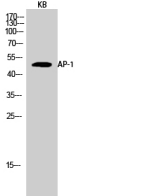
Western Blot analysis of various cells using primary antibody diluted at 1:1000(4°C overnight). Secondary antibody:Goat Anti-rabbit IgG IRDye 800(diluted at 1:5000, 25°C, 1 hour).



Western Blot analysis of various cells using AP-1 Polyclonal Antibody diluted at 1:2000



Western Blot analysis of KB cells using AP-1 Polyclonal Antibody diluted at 1:2000



Western blot analysis of lysates from HeLa cells, using c-Jun Antibody. The lane on the right is blocked with the synthesized peptide.

-20°C for 1 year

501 Changsheng S Rd, Nanhu Dist, Jiaxing, Zhejiang, China

Tel: 86 21 31007137 | E-mail: save@bt-laboratory.com | www.bt-laboratory.com