

AP-1 Polyclonal Antibody

Description

Product type	Primary Antibody
Code	BT-AP06314
Host	Rabbit
Isotype	IgG
Size	20ul, 50ul, 100ul
Immunogen	The antiserum was produced against synthesized peptide derived from human c-Jun. AA range:201-250
Mol wt	35676
Species reactivity	Human, Mouse, Rat
Clonality	Polyclonal
Recommended application	WB, IHC-p, IF, ICC, ELISA
Concentration	1 mg/ml
Full name	Transcription factor AP-1
Synonyms	Transcription factor AP-1; JUN; Transcription factor AP-1; Activator protein 1; AP1; Proto-oncogene c-Jun; V-jun avian sarcoma virus 17 oncogene homolog; p39

This product is for research use only, not for use in human, therapeutic or diagnostic procedure.

Background

This gene is the putative transforming gene of avian sarcoma virus 17. It encodes a protein which is highly similar to the viral protein, and which interacts directly with specific target DNA sequences to regulate gene expression. This gene is intronless and is mapped to 1p32-p31, a chromosomal region involved in both translocations and deletions in human malignancies.

Recommended Dilution

WB: 1: 500 - 1: 2000

IHC-p: 1: 100 - 1: 300

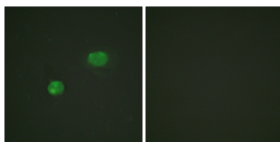
IF: 1: 200 - 1: 1000

ICC: 1: 200 - 1: 1000

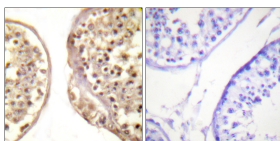
ELISA: 1: 5000

Not yet tested in other applications.

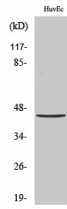
Images



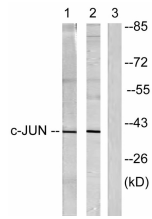
Immunofluorescence analysis of HeLa cells, using c-Jun Antibody. The picture on the right is blocked with the synthesized peptide.



Immunohistochemistry analysis of paraffin-embedded human testis tissue, using c-Jun Antibody. The picture on the right is blocked with the synthesized peptide.



Western Blot analysis of various cells using AP-1 Polyclonal Antibody diluted at 1:500



Western blot analysis of lysates from Jurkat cells, treated with Paclitaxel 1uM 60', using c-Jun Antibody. The lane on the right is blocked with the synthesized peptide.

Storage

-20°C for 1 year

501 Changsheng S Rd, Nanhu Dist, Jiaxing, Zhejiang, China

Tel: 86 21 31007137 | E-mail: save@bt-laboratory.com | www.bt-laboratory.com