

OATP1 Polyclonal Antibody

Description

Product type	Primary Antibody
Code	BT-AP06315
Host	Rabbit
Isotype	IgG
Size	20ul, 50ul, 100ul
Immunogen	The antiserum was produced against synthesized peptide derived from human SLC01A2. AA range:251-300
Mol wt	74145
Species reactivity	Human
Clonality	Polyclonal
Recommended application	WB, IHC-p, ELISA
Concentration	1 mg/ml
Full name	OATP1 Antibody
Synonyms	SLC01A2; OATP; OATP1; OATP1A2; SLC21A3; Solute carrier organic anion transporter family member 1A2; OATP-A; Organic anion-transporting polypeptide 1; OATP-1; Sodium-independent organic anion transport

This product is for research use only, not for use in human, therapeutic or diagnostic procedure.

Background

SLC01A2 encodes a sodium-independent transporter which mediates cellular uptake of organic ions in the liver. Its substrates include bile acids, bromosulphophthalein, and some steroidal compounds. The protein is a member of the SLC21A family of solute carriers. Alternative splicing of SLC01A2 results in multiple transcript variants.

Recommended Dilution

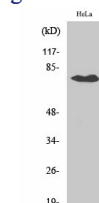
WB: 1: 500 - 1: 2000

IHC: 1: 100 - 1: 300

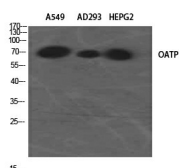
ELISA: 1: 20000

Not yet tested in other applications.

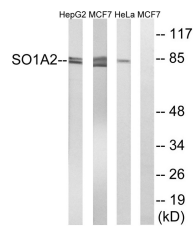
Images



Western Blot analysis of various cells using OATP1 Polyclonal Antibody diluted at 1:2000



Western Blot analysis of A549 AD293 HEPG2 using OATP1 Polyclonal Antibody. Antibody was diluted at 1:2000



Western blot analysis of lysates from HeLa, MCF-7, and HepG2 cells, using SLCO1A2 Antibody. The lane on the right is blocked with the synthesized peptide.

Storage

-20°C for one year

501 Changsheng S Rd, Nanhu Dist, Jiaxing, Zhejiang, China

Tel: 86 21 31007137 | E-mail: save@bt-laboratory.com | www.bt-laboratory.com