

OCRL Polyclonal Antibody

Description

Product type	Primary Antibody
Code	BT-AP06327
Host	Rabbit
Isotype	IgG
Size	20ul, 50ul, 100ul
Immunogen	The antiserum was produced against synthesized peptide derived from human OCRL. AA range:150-199
Mol wt	104205
Species reactivity	Human, Mouse
Clonality	Polyclonal
Recommended application	WB, ELISA
Concentration	1 mg/ml
Full name	OCRL Antibody
Synonyms	OCRL; INPP5F; OCRL1; Inositol polyphosphate 5-phosphatase OCRL-1; Lowe oculocerebrorenal syndrome protein

This product is for research use only, not for use in human, therapeutic or diagnostic procedure.

Background

OCRL encodes an inositol polyphosphate 5-phosphatase. OCRL, inositol polyphosphate-5-phosphatase is involved in regulating membrane trafficking and is located in numerous subcellular locations including the trans-Golgi network, clathrin-coated vesicles and, endosomes and the plasma membrane. OCRL, inositol polyphosphate-5-phosphatase may also play a role in primary cilium formation. Mutations in OCRL cause oculocerebrorenal syndrome of Lowe and also Dent disease. Alternate splicing results in multiple transcript variants.

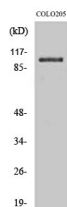
Recommended Dilution

WB: 1: 500 - 1: 2000

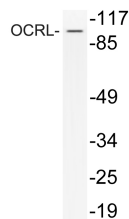
ELISA: 1: 10000

Not yet tested in other applications.

Images



Western Blot analysis of various cells using OCRL Polyclonal Antibody



Western blot analysis of lysate from COLO205 cells treated with Forskolol, using OCRL antibody.

Storage

-20°C for one year

501 Changsheng S Rd, Nanhu Dist, Jiaxing, Zhejiang, China

Tel: 86 21 31007137 | E-mail: save@bt-laboratory.com | www.bt-laboratory.com