

Oct-1 Polyclonal Antibody

Description

Product type	Primary Antibody
Code	BT-AP06329
Host	Rabbit
Isotype	IgG
Size	20ul, 50ul, 100ul
Immunogen	The antiserum was produced against synthesized peptide derived from human OCT1. AA range:41-90
Mol wt	76472
Species reactivity	Human, Mouse
Clonality	Polyclonal
Recommended application	WB, IHC-p, ELISA
Concentration	1 mg/ml
Full name	44470 Antibody
Synonyms	POU2F1; OCT1; OTF1; POU domain, class 2, transcription factor 1; NF-A1; Octamer-binding protein 1; Oct-1; Octamer-binding transcription factor 1; OTF-1

This product is for research use only, not for use in human, therapeutic or diagnostic procedure.

Background

The OCT1 transcription factor was among the first identified members of the POU transcription factor family (summarized by Sturm et al. 1993 [PubMed 8314572]). Members of this family contain the POU domain, a 160-amino acid region necessary for DNA binding to the octameric sequence ATGCAAAT.

Recommended Dilution

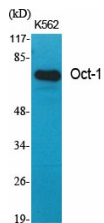
WB: 1: 500 - 1: 2000

IHC: 1: 100 - 1: 300

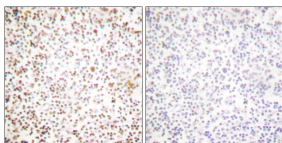
ELISA: 1: 5000

Not yet tested in other applications.

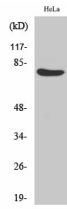
Images



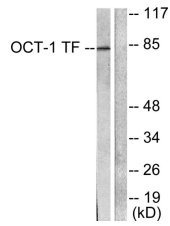
Western Blot analysis of various cells using Oct-1 Polyclonal Antibody diluted at 1:1000 cells nucleus.



Immunohistochemistry analysis of paraffin-embedded human lymph node tissue, using OCT1 Antibody. The picture on the right is blocked with the synthesized peptide.



Western Blot analysis of HeLa cells using Oct-1 Polyclonal Antibody diluted at 1:1000 cells nucleus.



Western blot analysis of lysates from HeLa cells, using OCT1 Antibody. The lane on the right is blocked with the synthesized peptide.

Storage

-20°C for one year

501 Changsheng S Rd, Nanhu Dist, Jiaxing, Zhejiang, China

Tel: 86 21 31007137 | E-mail: save@bt-laboratory.com | www.bt-laboratory.com