

Oct-6 Polyclonal Antibody

Description

Product type	Primary Antibody
Code	BT-AP06334
Host	Rabbit
Isotype	IgG
Size	20ul, 50ul, 100ul
Immunogen	The antiserum was produced against synthesized peptide derived from human OCT6. AA range:311-360
Mol wt	45270
Species reactivity	Human, Mouse, Rat
Clonality	Polyclonal
Recommended application	WB, ELISA
Concentration	1 mg/ml
Full name	44475 Antibody
Synonyms	POU3F1; OCT6; OTF6; POU domain; class 3, transcription factor 1; Octamer-binding protein 6; Oct-6; Octamer-binding transcription factor 6; OTF-6; POU domain transcription factor SCIP

This product is for research use only, not for use in human, therapeutic or diagnostic procedure.

Background

POU3F1 (POU Class 3 Homeobox 1) is a Protein Coding gene. Diseases associated with POU3F1 include neurogenic bowel and epidural abscess. Gene Ontology (GO) annotations related to POU3F1 include transcription factor activity, sequence-specific DNA binding and RNA polymerase II transcription coactivator activity. An important paralog of POU3F1 is POU6F1.

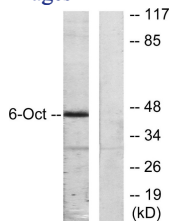
Recommended Dilution

WB: 1: 500 - 1: 2000

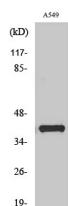
ELISA: 1: 20000

Not yet tested in other applications.

Images



Western blot analysis of lysates from A549 cells, using OCT6 Antibody. The lane on the right is blocked with the synthesized peptide.



Western Blot analysis of various cells using Oct-6 Polyclonal Antibody cells nucleus.

Storage

-20°C for one year

501 Changsheng S Rd, Nanhu Dist, Jiaxing, Zhejiang, China

Tel: 86 21 31007137 | E-mail: save@bt-laboratory.com | www.bt-laboratory.com